

Ore Production to Commence from Haoma in July 2011

Highlights

- Numerous high grade intersections confirm mining potential, drilling ongoing
 - Ore production from Haoma in early July 2011
 - Drilling has identified additional mineralisation west of Haoma
 - Underground mines debottlenecked by completion of ventilation shaft, mill expansion in progress
 - Haoma will be the fourth independent mine operating from existing infrastructure
-

Silver Lake Resources Ltd ("Silver Lake") is pleased to announce assay results from ongoing exploration at its Mount Monger Operations (refer to figure 1).

Silver Lake is targeting to increase production from the Mount Monger Operations to 200,000 ounces per annum by 2014 via mining from multiple underground and open pit ore sources. Silver Lake's Mount Monger Operations have a current JORC resource of 4.73 million tonnes at 8.7 g/t for 1.33 million ounces of gold (refer to table 2).

Production is currently being sourced from three independent mines accessed from the same infrastructure, Daisy Milano, Daisy East and Rosemary (refer to figures 1 & 2).

Haoma (refer to figures 1 & 2) is a historic underground mine located west of the Daisy Milano decline and the deposit was mined at a grade of 28.9 g/t Au. Mining ceased at approximately 180 metres below surface due to the orebody plunging onto a neighboring tenement. Silver Lake now controls the consolidated Mount Monger region and therefore can mine the down plunge extent of the previous workings.

Haoma has a current JORC resource of 109,300 tonnes at 18.7 g/t Au for 65,600 ounces of gold (refer to table 2). Assay results (refer to table 1 and figure 4) have been received from the ongoing underground drilling programme from the 30 level within Daisy Milano. These results are typical of the quartz vein hosted mineralisation at Daisy Milano and Daisy East containing galena, pyrite and visible gold on a porphyry contact. Drilling to date indicates that the ore thickness is greater than Daisy Milano. Strike extent to date is greater than 250 metres and is open to the north and south.

These latest drill results are located approximately 70 metres west of the decline infrastructure at the 32 level within Daisy Milano. An access drive has commenced developing towards the Haoma 32 level approximately 420 metres below the historical Haoma workings (refer to figures 2 & 3). It is expected to intersect the mineralisation by the end of June 2011. Once intersected ore driving will commence to the north and south to validate the strike extent and mined grade on the Haoma 32 level.

Drill holes HOA30001, HAO30008 and HAO30009 intersected mineralisation between 30 and 60 metres west of the new Haoma mineralised zone (refer to table 1).

Underground diamond drilling is continuing up dip towards the existing Haoma resource and down dip below 700 vertical metres (refer to figure 3). Ongoing drilling will be used to calculate the new resource and for mine planning purposes.

“The debottlenecking of the underground mines and increase in production sources is complimented by the Lakewood Mill expansion which is progressing to plan.” said Silver Lake’s Managing Director Les Davis.

“We have always believed that the stacked east-west nature of the Mount Monger mineralisation surrounding Daisy Milano is highly prospective and under explored. Haoma has the potential to become a significant gold deposit like Daisy Milano and is a clear focus for our exploration efforts.” Mr Davis added.

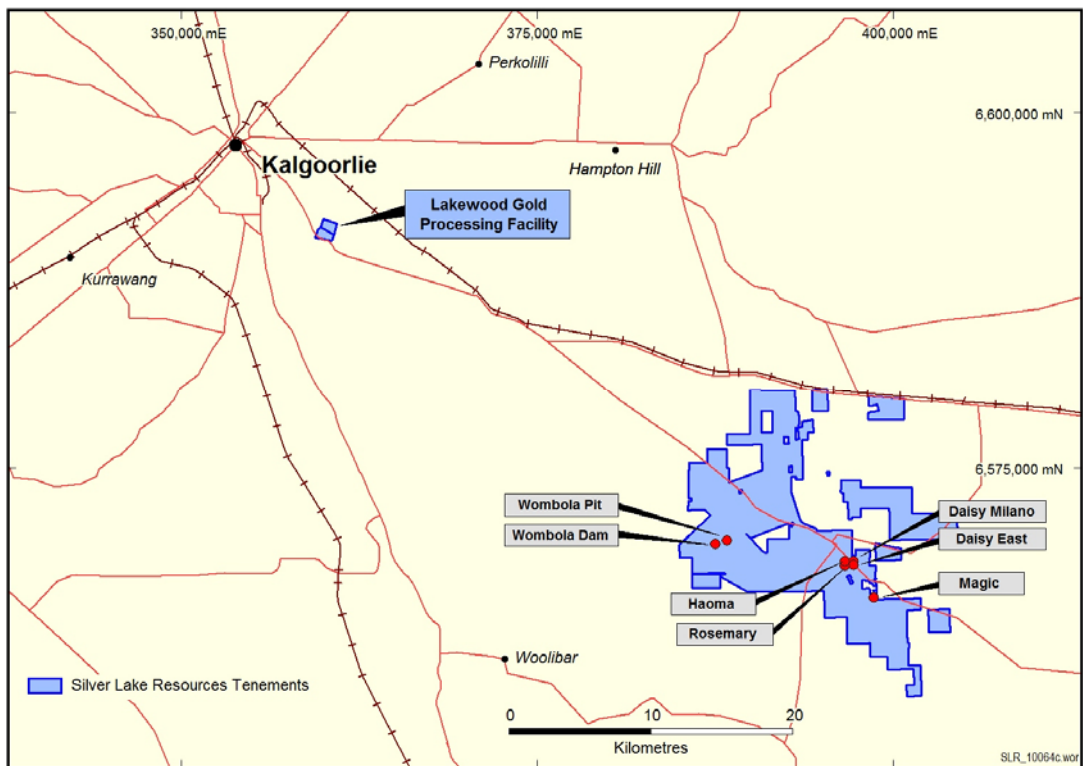


Figure 1: Mount Monger Operations location plan.

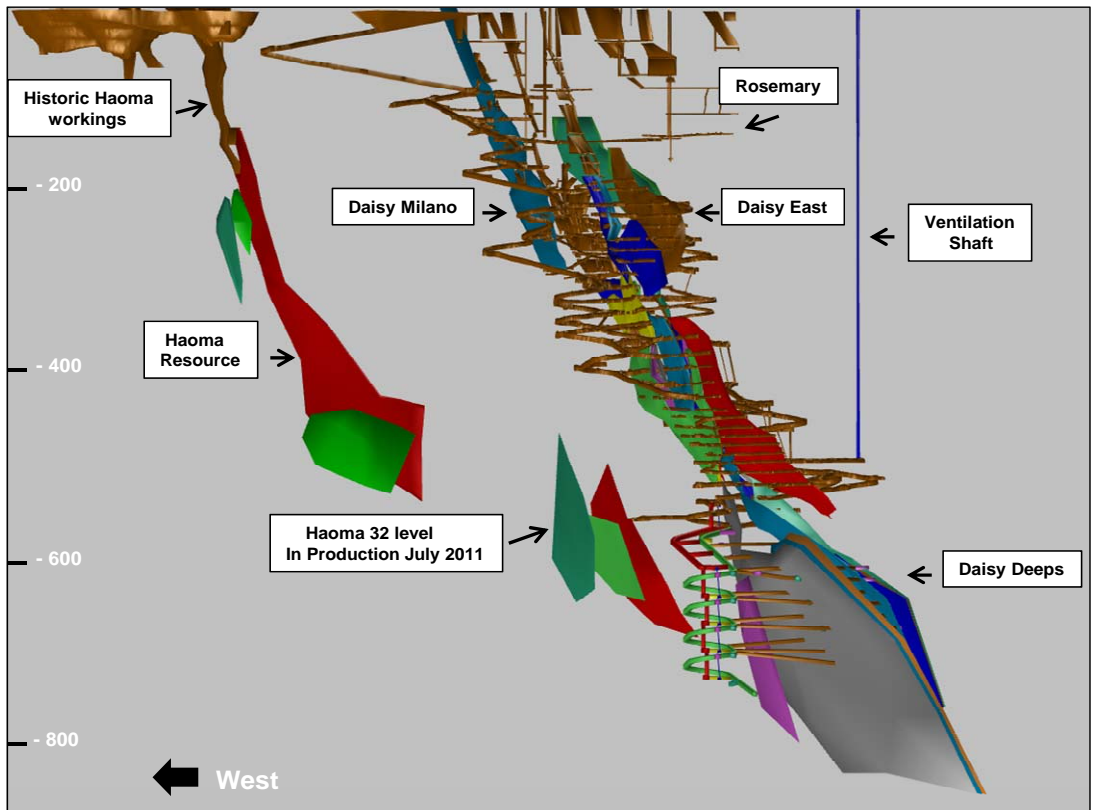


Figure 2: Schematic view showing location of Daisy Milano, Daisy East, Rosemary and Haoma mines accessed from same infrastructure (not to scale).

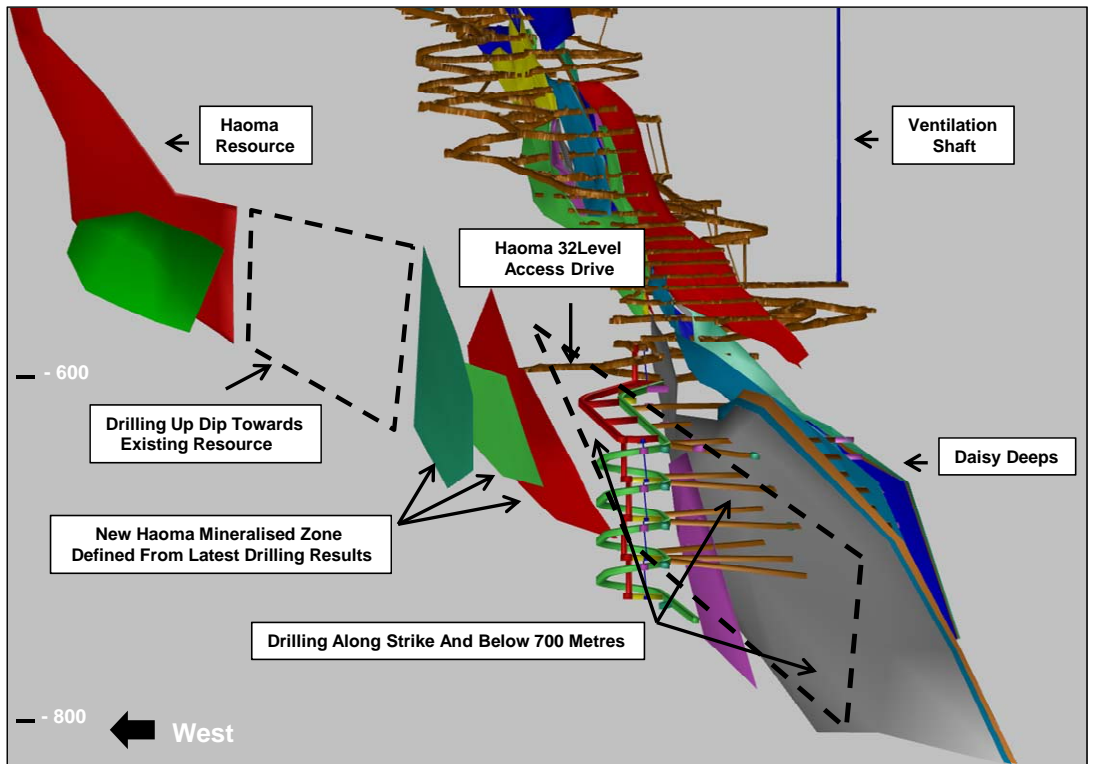


Figure 3: Schematic view of Haoma showing location of 32 access drive, new mineralised zone defined from latest drilling results and areas of ongoing drilling (not to scale).

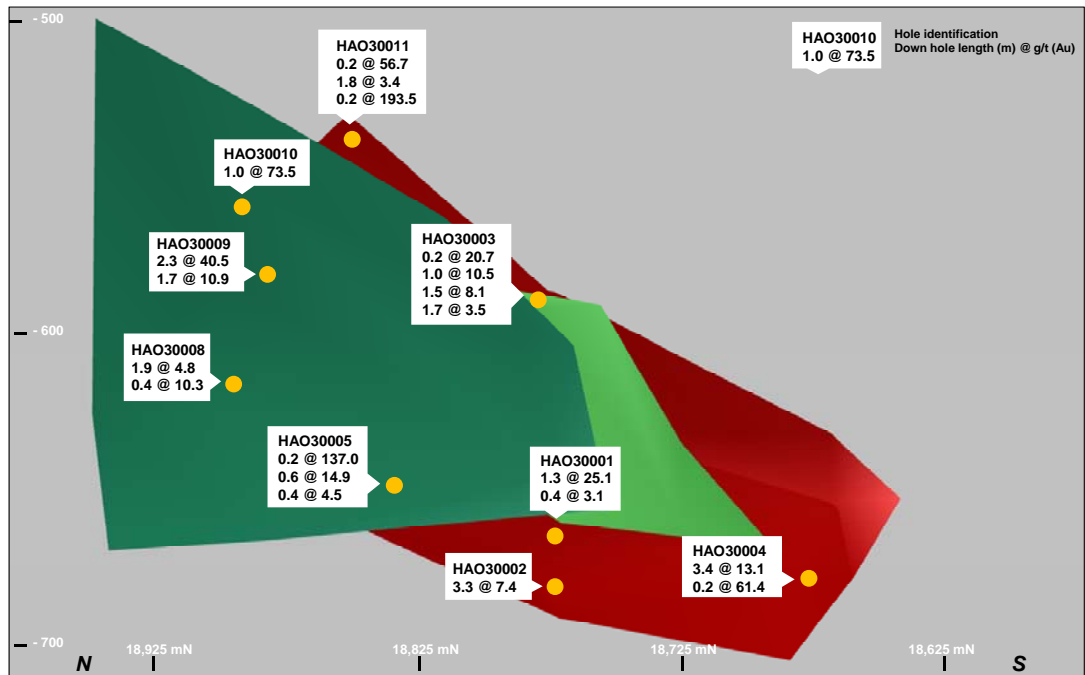


Figure 4: Schematic long section of Haoma showing recent intercepts (not to scale).

For more information about Silver Lake and its projects please visit our web site at www.silverlakeresources.com.au.

For further information please contact

Les Davis
 Managing Director
 +61 8 6313 3800
contact@silverlakeresources.com.au

Hole ID	Northing	Easting	From (m)	To (m)	Down hole Interval (m)	Grade g/t Au
HAO30001	18784	10209	141.20	142.50	1.3	25.1
HAO30001	18768	10203	151.30	151.70	0.4	3.1
HAO30001	18817	10130	281.62	281.92	0.3	49.7
HAO30001	18825	10114	311.71	312.20	0.5	5.5
HAO30002	18781	10222	152.40	155.70	3.3	7.4
HAO30003	18776	10203	99.46	99.66	0.2	20.7
HAO30003	18776	10200	103.07	104.07	1.0	10.5
HAO30003	18778	10180	124.53	126.00	1.5	8.1
HAO30003	18779	10174	189.00	130.68	1.7	3.5
HAO30004	18697	10225	162.00	165.40	3.4	13.1
HAO30004	18695	10223	167.60	167.80	0.2	61.4
HAO30005	18846	10214	142.35	142.55	0.2	137.0
HAO30005	18847	10212	144.00	144.60	0.6	14.9
HAO30005	18848	10211	146.80	147.20	0.4	4.5
HAO30008	18853	10203	136.11	138.00	1.9	4.8
HAO30008	18895	10158	201.54	201.74	0.4	10.3
HAO30008	18936	10111	269.23	269.43	0.2	24.1
HAO30009	18851	10203	127.51	129.81	2.3	40.5
HAO30009	18891	10156	189.48	191.20	1.7	10.9
HAO30009	18912	10132	221.00	222.00	1.0	5.4
HAO30010	18884	10167	177.00	178.00	1.0	73.5
HAO30011	18853	10202	133.25	133.45	0.2	56.7
HAO30011	18877	10176	169.00	170.80	1.8	3.4
HAO30011	18884	10168	180.50	180.70	0.2	193.5

Table 1: Drilling and assay results for Haoma greater than 3 g/t Au - Yellow highlighted intercepts are located between 30 and 60 metres west of the new Haoma mineralised zone.

About Silver Lake Resources Ltd:

Silver Lake is an ASX 300 gold producing and exploration company with a resource base of 3.0 million oz in highly prospective regions including the Mount Monger goldfield and the Murchison. Silver Lake's strategy is to develop large production centres at Mount Monger and at the Murchison with multiple mines at each centre.

Silver Lake's Mount Monger Operation contains the Daisy Milano, Daisy East and Rosemary underground mines 50 km south east of Kalgoorlie.

Mount Monger has additional multi mine potential underpinned by emerging open pit production from the Wombola Dam, Wombola Pit and Magic deposits. Furthermore the extension of the Haoma lode shows potential as another near term production source.

Gold ore from Mount Monger is transported to Silver Lake's 600,000 tpa Lakewood Gold Processing Facility located 5 km south east of Kalgoorlie and 45 km from the Daisy Milano mine. This facility is currently being expanded to 700,000 tonnes per annum by December 2011 and up to 1 million tonnes per annum by September 2012 quarter.

In the Murchison Silver Lake's strategy is to develop a second mining operation with multiple mines feeding a central processing facility. Accordingly, the focus is on extending resources, particularly below 100 metres depth, to sustain a 100,000 oz per annum operation. A 1.2 million tonne per annum mill has been acquired for this project. A decision to mine in the Murchison is expected late in 2011.

Silver Lake's exploration programme is targeting¹ 5 million oz Au in resource by June 2012. In addition, there is significant potential to increase the resource beyond that target over time.

Competent Person's Statement

The information in this report that relates to Exploration Results and Mineral Resources is based on information compiled by Mr Christopher Banasik who is a Member of the Australasian Institute of Mining and Metallurgy. Mr Banasik is a full time employee of Silver Lake Resources Ltd, and has sufficient experience which is relevant to the style of mineralisation under consideration to qualify as a Competent Person as defined in the 2004 edition of the JORC Code. Mr Banasik has given his consent to the inclusion in the report of the matters based on the information in the form and context in which it appears.

1: Information that relates to exploration and production targets refers to targets that are conceptual in nature, where there has been insufficient exploration to define a Mineral Resource and it is uncertain if further exploration will result in the determination of a Mineral Resource.

Notes to Table 1:

- Assay method is 40 gram fire assay.

Deposit	Measured Resources			Indicated Resources			Inferred Resources			Total Resources		
	Ore t '000s	Grade g/t Au	Total Oz Au '000s	Ore t '000s	Grade g/t Au	Total Oz Au '000s	Ore t '000s	Grade g/t Au	Total Oz Au '000s	Ore t '000s	Grade g/t Au	Total Oz Au '000s
Daisy Milano	38.0	24.7	30.1	457.1	23.1	339.5	227.0	31.3	228.4	722.0	25.8	598.0
Daisy East	28.2	48.1	43.5	53.6	44.9	77.4	27.9	15.7	14.1	109.7	38.3	135.1
Christmas Flat	-	-	-	338.6	4.1	44.1	448.5	6.3	91.3	787.1	5.4	135.4
Haoma	-	-	-	-	-	-	109.3	18.7	65.6	109.3	18.7	65.6
Costello	-	-	-	81.2	3.3	8.6	128.2	3.1	12.8	209.4	3.2	21.4
Lorna Doone	-	-	-	-	-	-	111.0	4.0	14.3	111.0	4.0	14.3
Magic	-	-	-	749.2	4.1	98.3	1,070.9	5.2	178.0	1,820.1	4.7	276.3
Wombola Pit	-	-	-	132.2	2.6	11.1	171.0	2.9	15.7	303.0	2.8	26.8
Wombola Dam	-	-	-	125.1	2.6	10.3	432.0	3.1	43.2	557.2	3.0	53.5
Total Mount Monger	66.1	34.7	73.7	1937.1	9.5	589.2	2,725.6	7.6	663.3	4,728.7	8.7	1,326.2
Caustons	-	-	-	625.6	3.9	78.2	462.2	3.3	48.9	1,087.8	3.6	127.1
Caustons South	-	-	-	424.8	2.0	27.6	296.5	4.2	39.6	721.3	2.9	67.2
Tuckabianna West	-	-	-	1,658.0	2.2	117.3	1,822.0	2.9	169.9	3,480.0	2.6	287.2
Friars	-	-	-	-	-	-	402.0	1.9	24.6	402.0	1.9	24.6
Jasper Queen	-	-	-	-	-	-	175.0	2.6	14.6	175.0	2.6	14.6
Gilt Edge	-	-	-	63.0	3.0	6.0	33.0	5.2	5.5	96.0	3.8	11.6
Genesis	-	-	-	353.7	1.8	20.2	11.8	2.4	0.9	365.5	1.8	21.2
Exodus	-	-	-	457.4	1.6	23.7	101.3	2.8	9.0	558.7	1.8	32.6
Julies Reward	-	-	-	461.3	3.2	46.7	254.7	3.4	27.8	716.0	3.2	74.6
Sherwood	-	-	-	-	-	-	349.0	2.2	24.9	349.0	2.2	24.9
Jaffas Folly	-	-	-	6.0	4.3	0.8	202.0	1.4	9.1	208.0	1.5	9.9
Little John	-	-	-	-	-	-	1,201.0	1.8	69.5	1201.0	1.8	69.5
TMC/Katies	-	-	-	476.0	2.1	32.1	626.0	2.4	47.9	1,102.0	2.3	80.0
Total Tuckabianna	-	-	-	4,425.8	2.4	352.8	5,936.4	2.6	492.2	10,462.2	2.5	845.0
Comet	36.0	0.6	0.7	2,776.2	3.7	325.5	1,150.3	2.5	91.5	3,962.5	3.3	417.8
Moyagee	-	-	-	-	-	-	1,088.4	7.0	245.8	1,088.4	7.0	245.8
Total Murchison	36.0	0.6	0.7	7,302.0	2.9	678.3	8,175.2	3.2	829.6	15,513.2	3.0	1,508.6
Rothsay	-	-	-	-	-	-	591.2	7.0	132.9	591.2	7.0	132.9
Total Silver Lake	102.1	22.7	74.4	9,239.1	4.3	1,267.5	11,491.9	4.4	1,625.7	20,833.1	4.4	2,967.6

Table 2: December 2010 Resource Inventory

Rounding may give rise to unit discrepancies in this table