

31 Malcolm Street
West Perth WA 6005
Ph: +61 8 6313 3800
Fax: +61 8 6313 3888
ABN: 38 108 779 782

Silver Lake Resources Ltd ("Silver Lake" or "the Company") is pleased to present this Quarterly Activities Report.



Les Davis
Managing Director

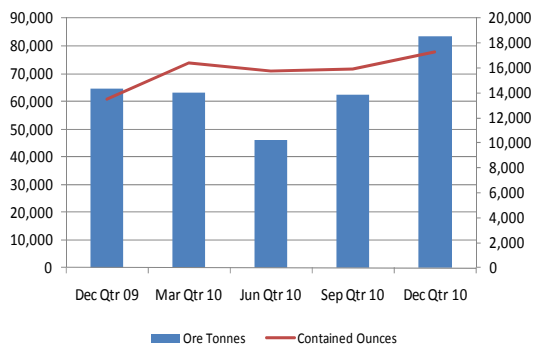
QUARTERLY ACTIVITIES REPORT

For the quarter ended 31 December 2010

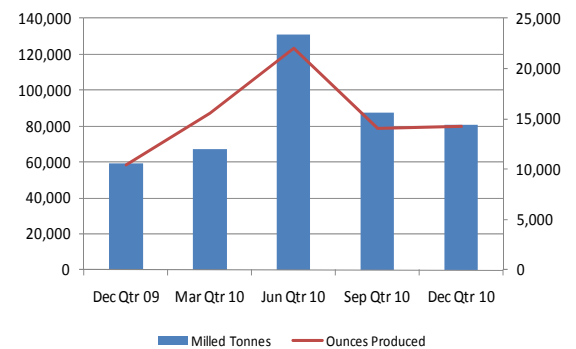
Highlights

- 17% increase in JORC resource inventory to 3.0 million ounces of gold at a sustained high grade
- Half year (unaudited) pre-tax profit A\$8.7 million
- Gold in ore production totalled 20,888 ounces
- December quarter operating cashflow A\$9.5 million
- Encouraging exploration results at Mount Monger & Murchison
- Silver Lake awarded 2010 Gold Miner of the Year from the Gold Mining Journal for the second consecutive year

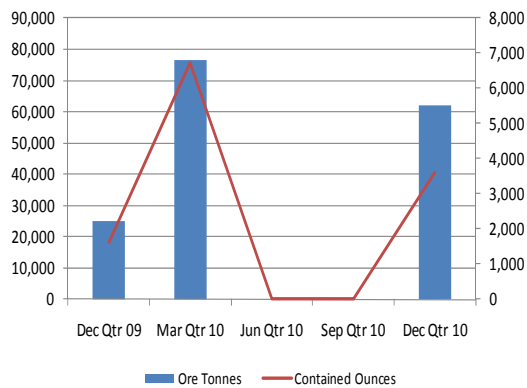
Operations - Underground



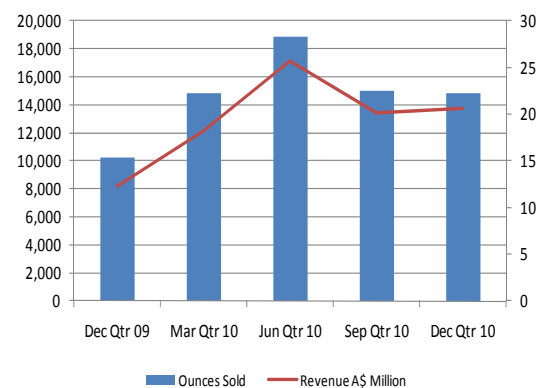
Operations - Processing



Operations - Open Pit



Gold Sales & Revenue



Quarterly Overview

Silver Lake's strategy is to develop large production centres at Mount Monger and at the Murchison with multiple mines at each centre. Further strategic milestones were reached during the quarter, including:

Mount Monger Operations:

- mining from two underground mines and one open pit mine;
- 520 metre deep ventilation shaft on schedule for completion in the June 2011 quarter;
- Haoma exploration results support another mine accessible from existing underground infrastructure; and
- 23% increase in JORC Resource inventory which now totals 1.3 million ounces at a sustained high grade of 8.7 g/t Au.

Murchison Projects:

- ongoing exploration continues to deliver encouraging results particularly at Tuckabianna West;
- 14% increase in JORC Resource inventory which now totals 1.5 million ounces at 3.0 g/t Au; and
- definitive feasibility study progressing to plan.

Operations

Quarterly gold in ore production from the Mount Monger Operations totalled 20,888 ounces including:

Daisy Milano 14,907 ounces;

Daisy East 2,390 ounces; and

Costello 3,591 ounces.

Gold in ore production was 31% higher than the previous quarter due to increased ounces from Daisy Milano and the commencement of Costello Open Pit. Mining studies are in progress for Haoma, Wombola Dam and Wombola Pit.

Milled gold production for the quarter totalled 14,229 ounces. Milled production for the last two quarters has been constrained due to no ore stockpiled in front of the mill from August 2010 through to December 2010. This issue has been rectified with the commencement of production from Costello open pit and record underground production in December 2010 totalling 32,000 tonnes containing 6,600 ounces of gold. Unprocessed ore stocks available for mill feed at the end of the quarter totalled 81,000 tonnes containing 8,000 ounces of gold.

The company is confident on a strong second half to deliver market guidance of 80,000 ounces from underground and 10,000 to 25,000 ounces from open pit sources.

Gold bullion sold for the quarter totalled 14,820 ounces at an average realised price of A\$1,388 oz for A\$20.6 million revenue. Bullion refined and not sold at the end of the quarter totalled 2,735 ounces.

Cash operating costs for the quarter were A\$644 per ounce and operating cashflow was A\$9.5 million.

Cash and bullion on hand as of 31 December 2010 totalled A\$27.8 million.

Exploration

Successful exploration over the last six month period has delivered a 17% increase to the company's JORC Resource inventory which now totals 3.0 million ounces of gold as of 31 December 2010 (refer to table 3).

Ongoing drilling at Mount Monger and in the Murchison continues to deliver encouraging results.

Mount Monger	Units	Year to Date 10/11	Dec Qtr 2010	Sep Qtr 2010	Full Year 09/10
<u>Daisy Milano (including low grade)</u>					
Ore hoisted	Tonnes	106,657	65,592	41,065	208,725
Mined grade ¹	g/t Au	7.5	7.1	8.2	7.5
Gold in ore hoisted	Oz	25,711	14,907	10,804	50,035
<u>Daisy East</u>					
Ore hoisted	Tonnes	39,201	17,892	21,309	16,392
Mined grade	g/t Au	6.0	4.3	7.5	14.5
Gold in ore hoisted	Oz	7,508	2,390	5,118	7,638
<u>Costello - Open Pit</u>					
Ore hoisted	Tonnes	62,074	62,074	-	114,799
Mined grade ¹	g/t Au	1.80	1.80	-	2.4
Gold in ore hoisted	Oz	3,591	3,591	-	8,998
Total Ore hoisted ²	Tonnes	207,932	145,558	62,374	339,916
Mined Grade ²	g/t Au	5.5	4.5	7.9	6.1
Gold in ore hoisted	Oz	36,810	20,888	15,922	66,671
Ore Milled ²	Tonnes	168,077	80,536	87,541	315,343
Head grade ²	g/t Au	5.5	5.8	5.3	6.2
Contained gold	Oz	29,816	14,975	14,841	63,021
Recovery	%	95	95	95	95
Gold produced	Oz	28,242	14,229	14,013	60,146
Gold refined & sold ²	Oz	29,796	14,820	14,976	54,969

Table 1: Mount Monger Operations production statistics

Notes to Table 1:

1: Daisy Milano & Daisy East production for October 2010 & November 2010 has been reconciled through the mill. December 2010 production was still being milled at the end of the quarter. 19% of Costello ore production tonnes have been reconciled through the mill. Stockpiled ore continues to be processed.

2: Ore mined and milled is from all ore sources. Bullion refined and not sold at the end of the quarter totalled 2,735 ounces.

Mount Monger Operations

- **Safety**

Unfortunately a Lost Time Injury (“LTI”) occurred during the quarter at Lakewood Gold Processing Facility after 3 years LTI free. An electrician caught two fingers in a V belt pulley lacerating two fingers which required surgery. The 12 month moving average Lost Time Injury Frequency Rate (LTIFR) stands at 5.46.

- **Underground production & development - Daisy Milano**

Production:

Underground ore production for the quarter totalled 65,592 tonnes at an average grade of 7.1 g/t Au for 14,907 oz, 38% higher than the previous quarter.

Approximately 45% of the ounces produced for the quarter came from ore development with the balance from stoping activities. Development ore was sourced from the 7, 8, 9, 10, 19 and 30 levels. Lower grade stoping panels were completed during the quarter on the 21, 22 and 23 levels north of the dolerite dyke and extraction of the higher grade zones to the south has commenced. High grade ore was predominately sourced from the 2101, 2501, 2601, 2701 & 2801 stopes.

Refer to figure 1 for mining areas and grade contours.

Waste development:

Access development to the 30 level and ventilation shaft holing point was completed during the quarter. Decline development at the end of the quarter was 40 metres from the 31 level crosscut.

The ventilation shaft is progressing to plan. The 520 metre deep pilot hole has been completed and back reaming to 4.5 metres diameter will commence at the end of January 2011. The project is on plan to be completed in the June 2011 quarter as expected.

- **Underground production & development - Daisy East**

Production:

Underground ore production for the quarter totalled 17,892 tonnes at an average grade of 4.3 g/t Au for 2,390 oz. Production was primarily sourced from ore development on the 10 and 13 levels. Ore driving on the northern portions of the 10 & 13 levels yielded lower grades as expected from the diluted resource model.

Refer to figure 2 for mining areas and grade contours.

As previously announced, ore development will be the primary source of Daisy East production for the coming year as the ventilation shaft is being constructed. Post completion of the ventilation shaft, waste development will have exposed ~120,000 ounces of gold in stoping blocks. Extraction from the stoping blocks will allow high grade production to ramp up in the first quarter of FY12.

Waste development:

Access development to the 10 and 1050 levels was completed during the quarter and the internal decline down to the 14 level is progressing to plan.

- **Costello**

Open pit ore production for the quarter totalled 62,074 tonnes at an average grade of 1.8 g/t Au for 3,591 oz. Ore was sourced from the lower grade blocks in the upper portion of the pit. The pit is performing to expectations and will be completed in the March 2011 quarter.

- **Gold Production - Lakewood Gold Processing Facility**

80,536 tonnes were milled at 5.8 g/t Au for 14,229 ounces recovered. The mill operated on reduced throughput during the quarter due to the lack of stockpiled ore in front of the mill.

The mill was unavailable for one week during the quarter for planned maintenance activities to replace the white metal bearings and reline the mill. Mill feed consisted of 85% hard rock at 6.5 g/t Au and 15% oxide (soft rock) at 1.8 g/t Au.

Ore stocks at the end of the quarter totalled 81,000 tonnes containing 8,000 ounces of gold.

- **Gold Sales**

14,820 ounces were refined and sold at an average realised price of A\$1,388 oz during the quarter. Bullion refined and not sold at the end of the quarter totalled 2,735 ounces.

- **Outlook**

FY2011 production guidance is unchanged at 90,000 to 105,000 oz of gold from the following ore sources:

- Underground 80,000 oz
- Open pit sources 10,000 oz to 25,000 oz.

- **Other**

The company has engaged the services of Lukah Mining, a Kalgoorlie based mining contractor to undertake development and mechanised mining activities at Mount Monger Operations. Lukah Mining commenced on site late November 2010.

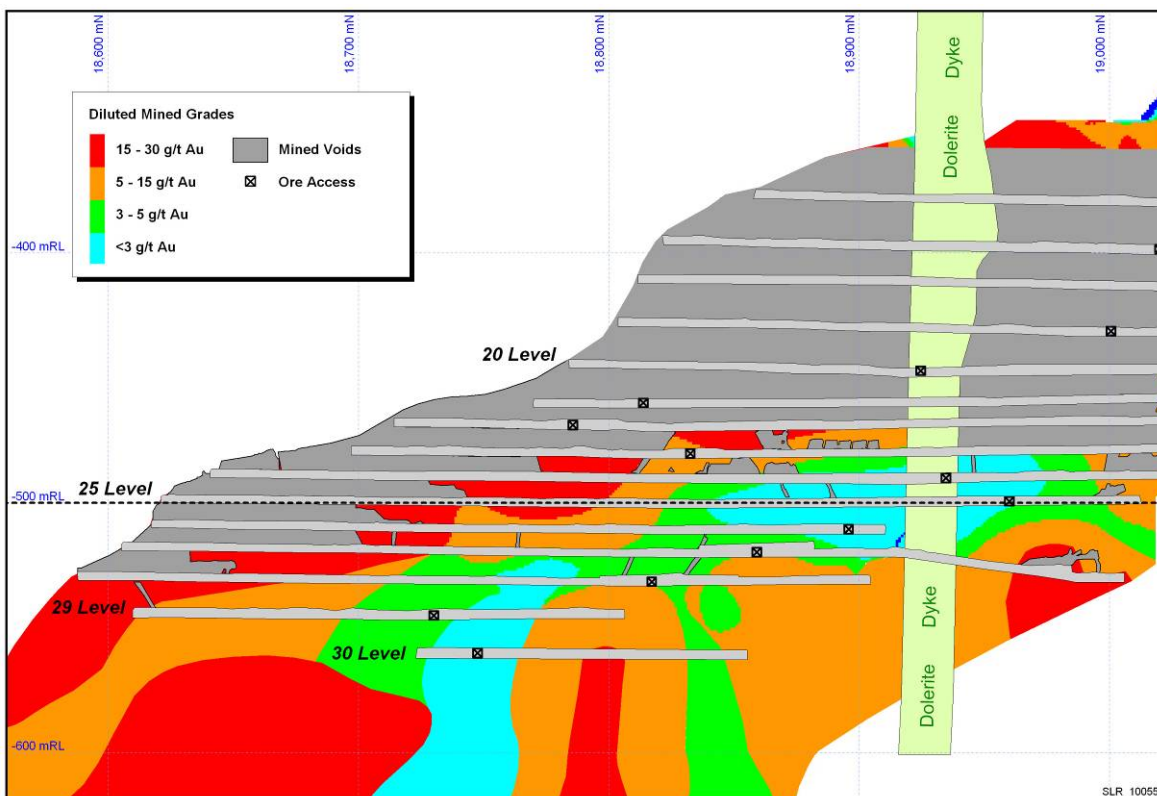


Figure 1: Long section of Daisy Milano and Daisy Deeps indicating gram metre contours.

Area above dotted line (500 vertical metres or 25 level) is referred to as Daisy Upper and area below is referred to as Daisy Deeps.

The red and orange areas are the high grade zones and the green and blue areas are the lower grade zones.

Grey areas shown are the mined voids. Long section represents footwall mineralisation only and excludes hanging wall mineralisation.

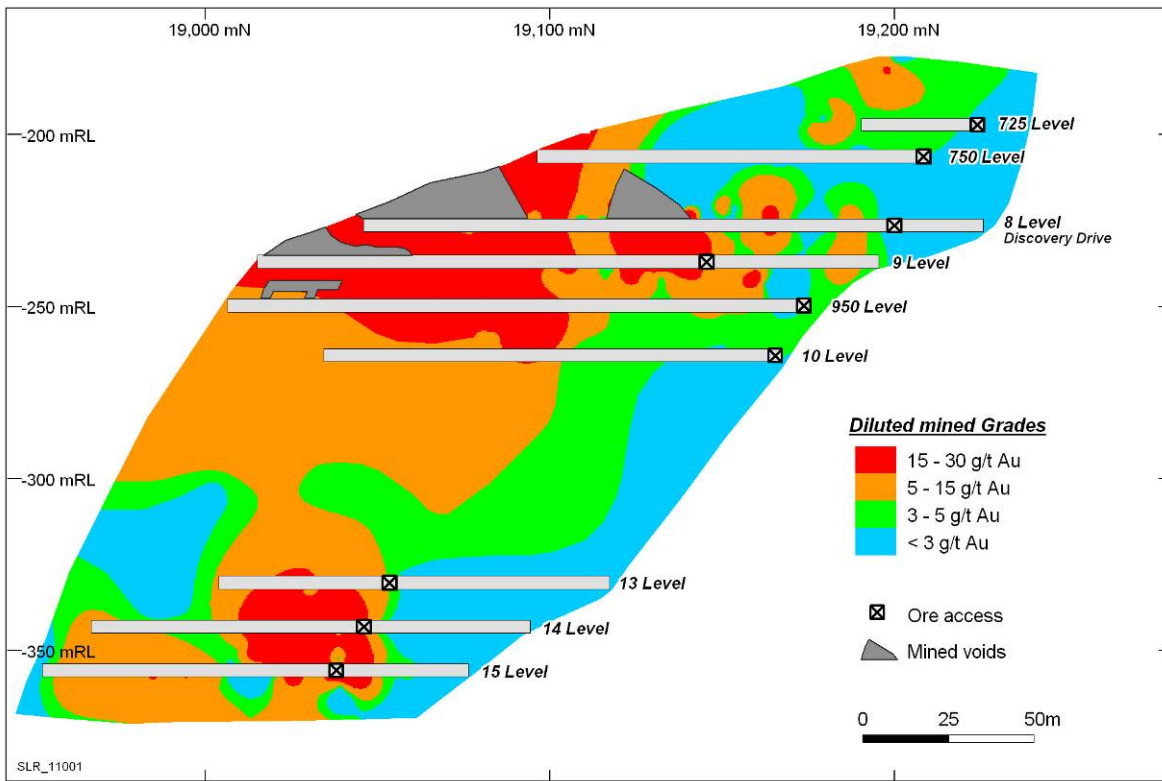


Figure 2: Long section of Daisy East indicating gram metre contours.

The red and orange areas are the high grade zones and the green and blue areas are the lower grade zones.

Grey areas shown are the mined voids.

- Unit Costs

Cash operating costs¹ for the quarter were A\$644 per oz marginally lower than the previous quarter.

Cost Centre	Units	Dec Qtr 2010	Sep Qtr 2010	Full Year 09/10
<u>Cash Operating Cost</u> ¹	<u>A\$oz</u>	<u>644</u>	<u>658</u>	<u>597</u>
Waste Development Cost - Sustaining ²	A\$oz	142	142	138
Royalties	A\$oz	41	54	39
<u>Total Cost - Sustainable</u> ³	<u>A\$oz</u>	<u>827</u>	<u>854</u>	<u>774</u>
Waste Development Cost - Prepaid ⁴	A\$oz	230	170	90
<u>Total Cost - Period</u> ⁵	<u>A\$oz</u>	<u>1,057</u>	<u>1,024</u>	<u>864</u>
Average realised price	A\$oz	1,388	1,347	1,257
Revenue	A\$M	20.6	20.2	69.1

Table 2: Mount Monger Operations financial statistics.

Notes to Table 2.

- 1: Cash operating cost include all direct underground and open pit mining costs, road transport and processing costs during the period.
- 2: Waste Development Cost - Sustaining includes all underground capital decline development and waste ore access development costs and costs for mining open pit waste material. These costs are an estimated life of mine waste development costs per ounce.
- 3: Total Cost - Sustainable are inclusive of cash operating costs, sustaining waste development costs and royalties.
- 4: Waste Development Cost - Prepaid includes all underground capital decline development and waste ore access development costs and costs for mining open pit waste material. These costs are prepaid to the extent that they were spent during the period and reflect future production.
- 5: Total Cost - Period reflects the total cash spent on operations during the period and does not differentiate whether the costs were spent to achieve the current period's production or development in preparation for future production.

Exploration and Development - Mount Monger

Exploration activities are ongoing at the company's Mount Monger Operations (refer to figures 3 & 4 for location plan and drilling targets).

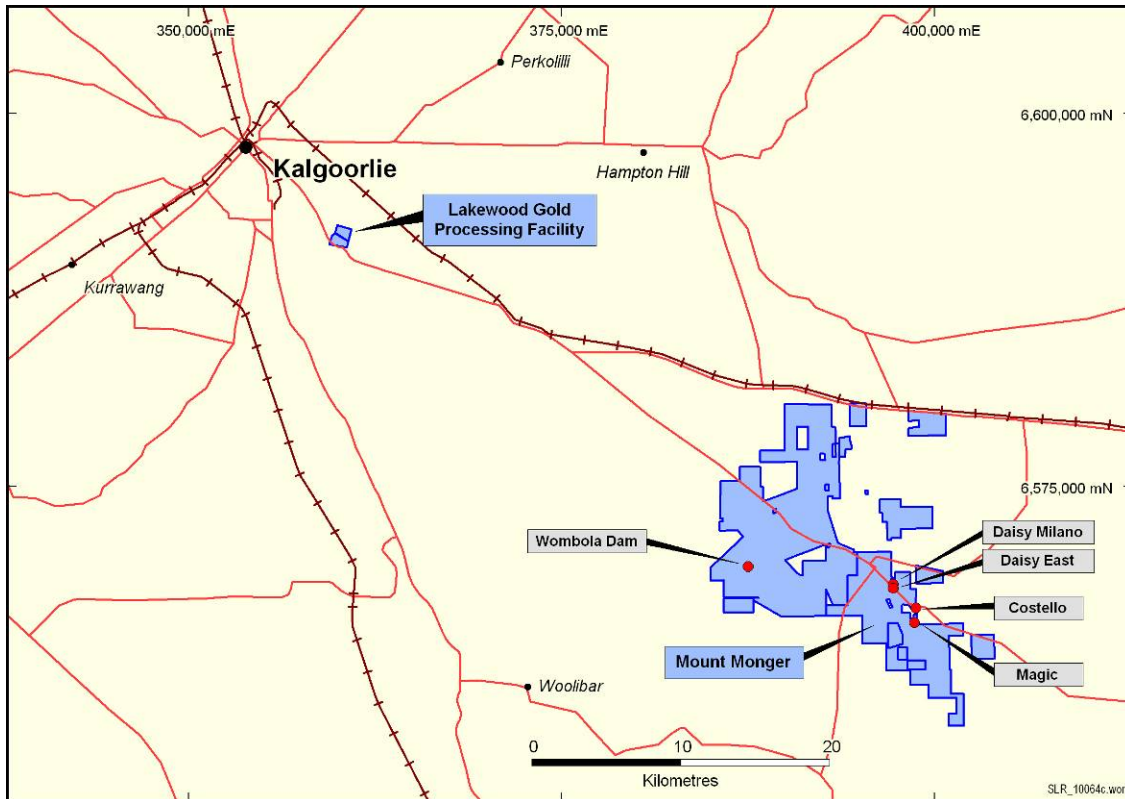


Figure 3: Mount Monger Operations location plan.

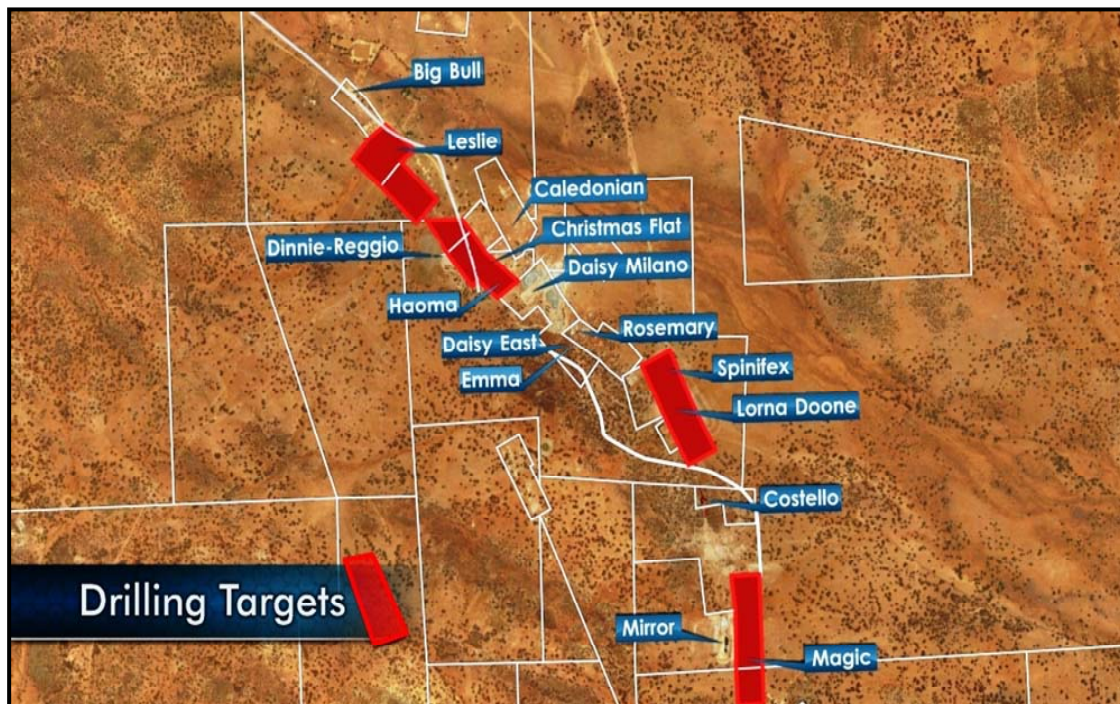


Figure 4: Mount Monger projects location plan showing drilling targets.

- Magic

Drilling is ongoing at the Magic deposit located 3 km south of the Daisy Milano mine (refer to figure 3 for location).

Drilling over the last two quarters has increased the JORC Resource at Magic by 81% to 1.8 million tonnes at 4.7 g/t Au for 276,300 ounces (refer to table 3). As a result of this significant increase the company is undertaking a mining study based around the new resource. Results of the study are expected to be completed in the September 2011 quarter.

Metallurgical test work is ongoing and results are expected in the March 2011 quarter.

- Haoma

The Haoma deposit (refer to figure 4) is a historic underground mine located approximately 200 metres west of the Daisy Milano decline and was mined at a grade of 28.9 g/t Au. Mining ceased at approximately 180 metres below the surface due to the orebody plunging onto a neighboring tenement. Silver Lake now controls the consolidated Mount Monger region and therefore can mine the down plunge extent of the previous workings.

Assay results (refer to figure 5) were received during the quarter from the ongoing underground drilling programme from various levels within Daisy Milano. These results are typical of the narrow vein quartz hosted mineralisation at Daisy Milano and Daisy East. Drilling to date suggests that there are multiple close spaced mineralised veins within the deposit. The mineralisation remains open along strike, to the south and at depth.

Drilling during the quarter resulted in a maiden JORC Resource of 109,300 tonnes at 18.7 g/t Au for 65,600 ounces (refer to table 3). A mining study is in progress based around this initial resource with an expected decision to mine in the June quarter 2011.

Refer to ASX announcement 9 December 2010 for further information.

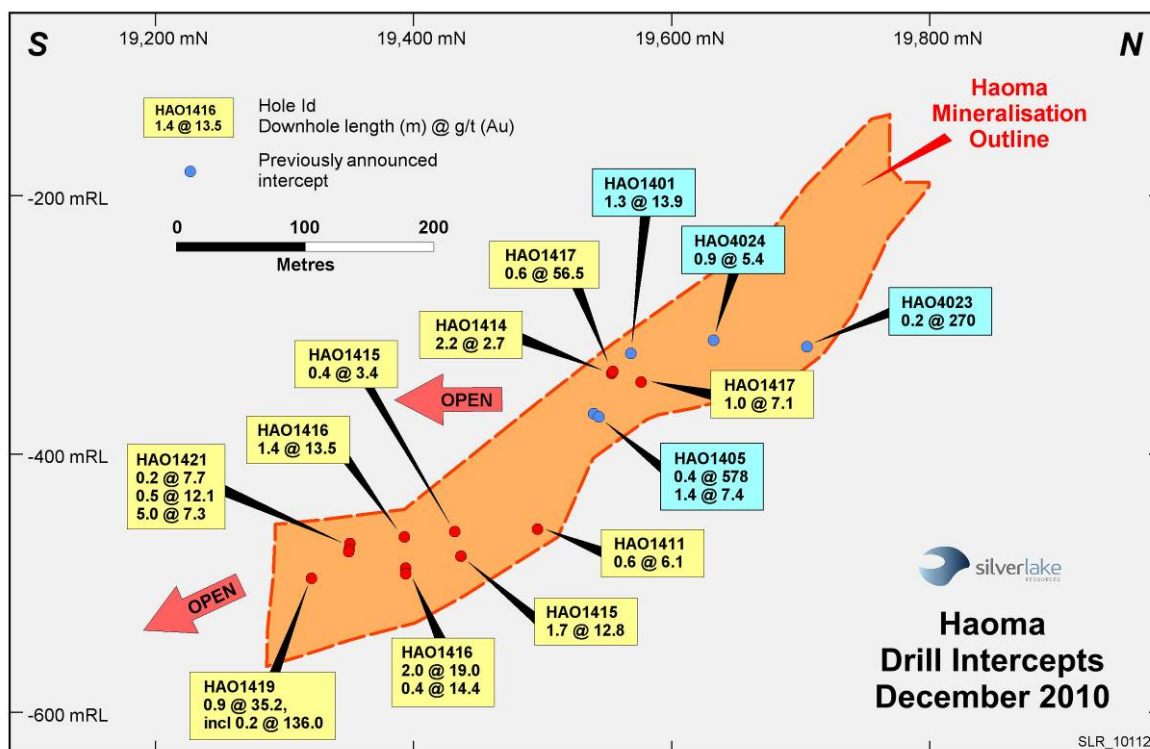


Figure 5: Haoma long section showing recent intercepts.

- **Rosemary & Emma**

A development drive is in progress on the Daisy Milano 6 level to break through to the bottom of the old Rosemary shaft. The drive was stopped 30 metres from the bottom of the shaft and a diamond drill hole was drilled in advance of the face which intersected and dewatered the shaft.

The drive has recommenced and is expected to be completed in the March 2011 quarter. Once access to the old workings has been established, geological mapping and sampling of the old drives and un-stoped areas will occur. This data along with previously announced drill intercepts will be used to update the geological model and further target down dip extensions of the mineralisation.

Refer to figure 4 for location plan.

- **Wombola Dam & Wombola Pit**

Wombola Dam and Wombola Pit have a current resource of 80,300 ounces of gold (refer to table 3).

Six surface diamond drill holes were completed during the quarter at Wombola Dam with assays outstanding. The diamond drill core will also be used for metallurgical test work to complete mining studies with the view of commencing production in the near term.

Further regional drilling is being planned on these northern tenements.

Exploration and Development - Murchison

Exploration activities are ongoing at the company's Murchison projects (refer to figure 6 for location plan).

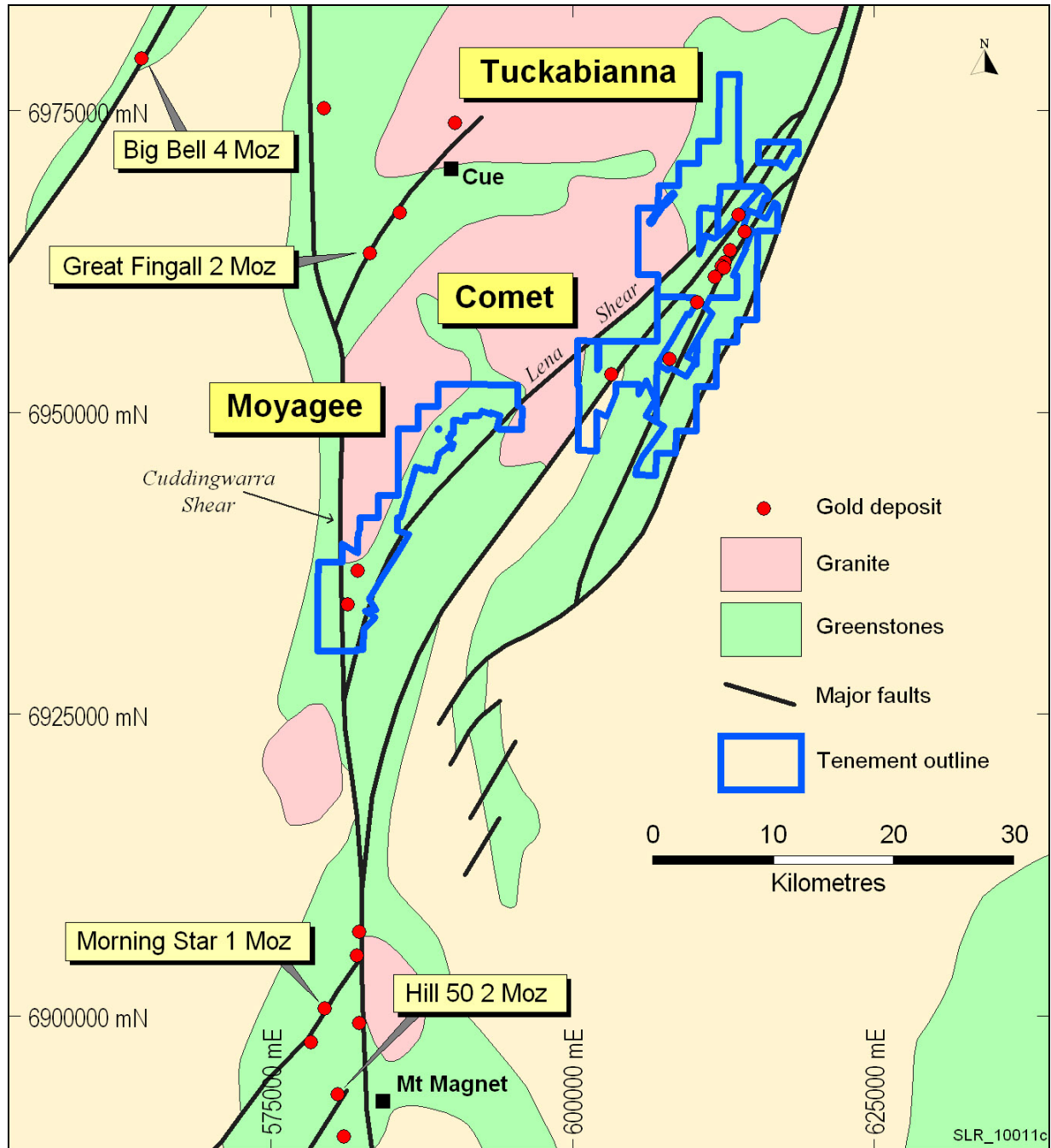


Figure 6: Murchison projects location plan.

Tuckabianna

The Tuckabianna deposits are based around the 13 km long main and parallel zones (refer to figure 7) and are subject to an ongoing drill programme. These deposits already have a resource of 10.5 million tonnes at 2.5 g/t Au for 845,000 oz (refer to table 3) and have previously produced 375,000 oz of gold from open pit mines. Current resources have been constrained by limited drilling, particularly at depth, as only 3% of drill holes in the area are deeper than 100 metres.

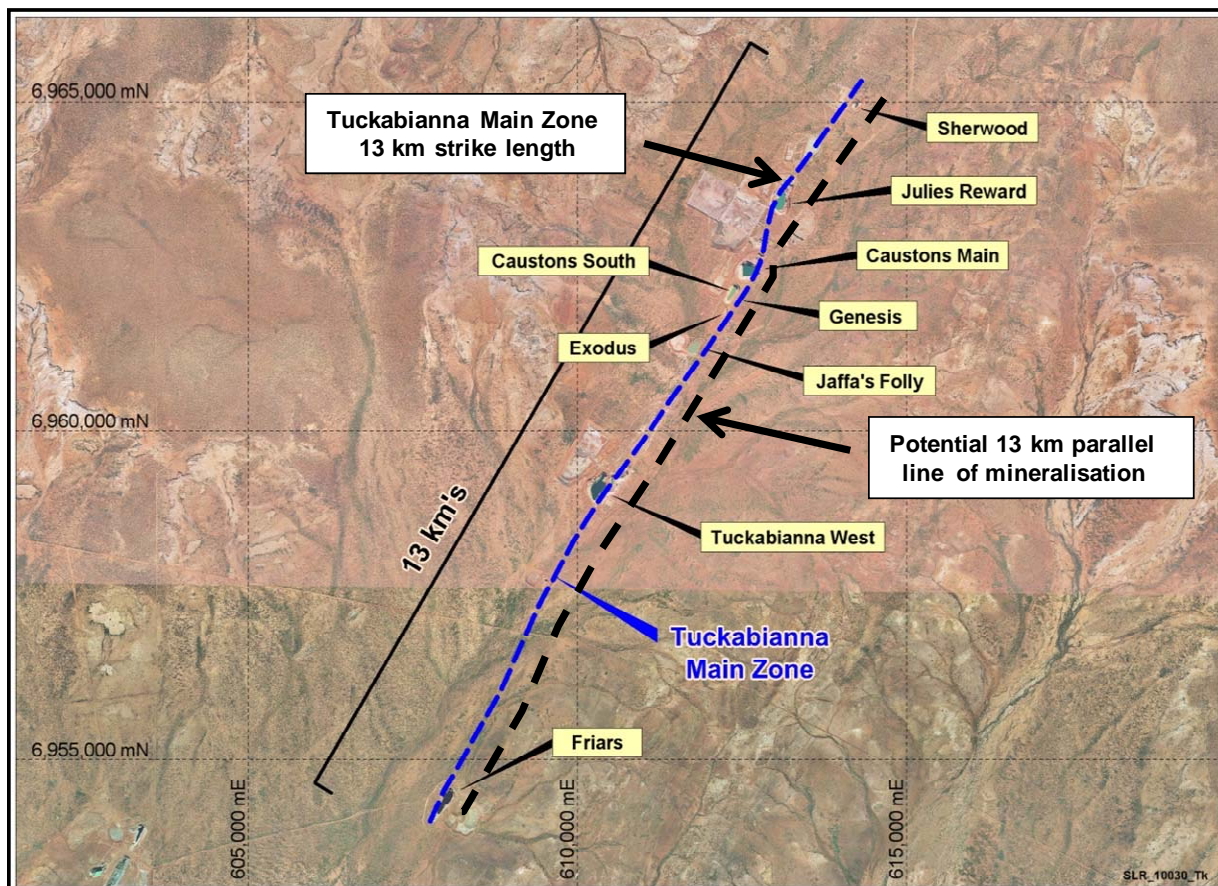


Figure 7: Aerial view of 13km long Tuckabianna main zone showing previous open pit mines that produced 375,000 oz of gold.

- Tuckabianna West

The Tuckabianna West deposit was the highest yielding open pit gold mine in the field producing 157,000 oz and was mined to a depth of 110 metres.

Assay results were received from the ongoing surface drilling programme during the quarter. These results indicate continuous high grade mineralisation on multiple lodes beneath the previously mined open pit. The high grade intersections range from 94 metres to 420 metres below the surface and remain open to the north, south and at depth (refer to figures 8 & 9).

This has resulted in a 92% increase in the JORC resource which now totals 3.5 million tonnes at 2.6 g/t Au for 287,200 ounces. Ongoing drilling is targeting the depth and strike extensions to validate the underground mining potential of the deposit.

Refer to ASX announcement 14 December 2010 for further information.

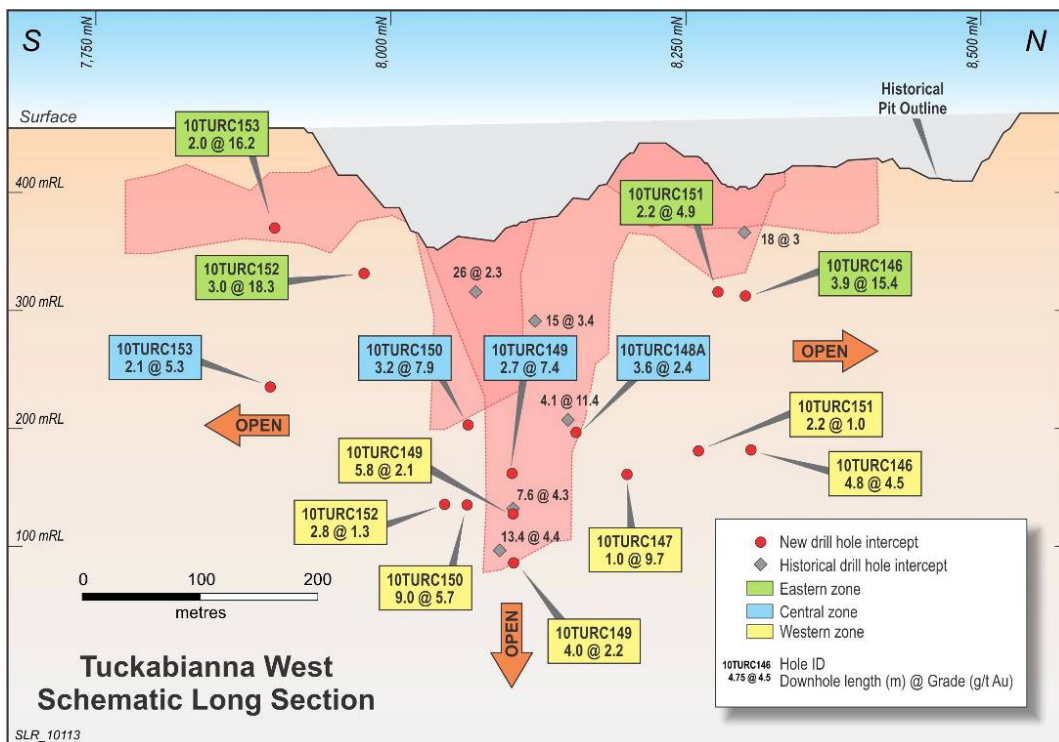


Figure 8: Tuckabianna West Long section showing latest intercepts in multiple zones.

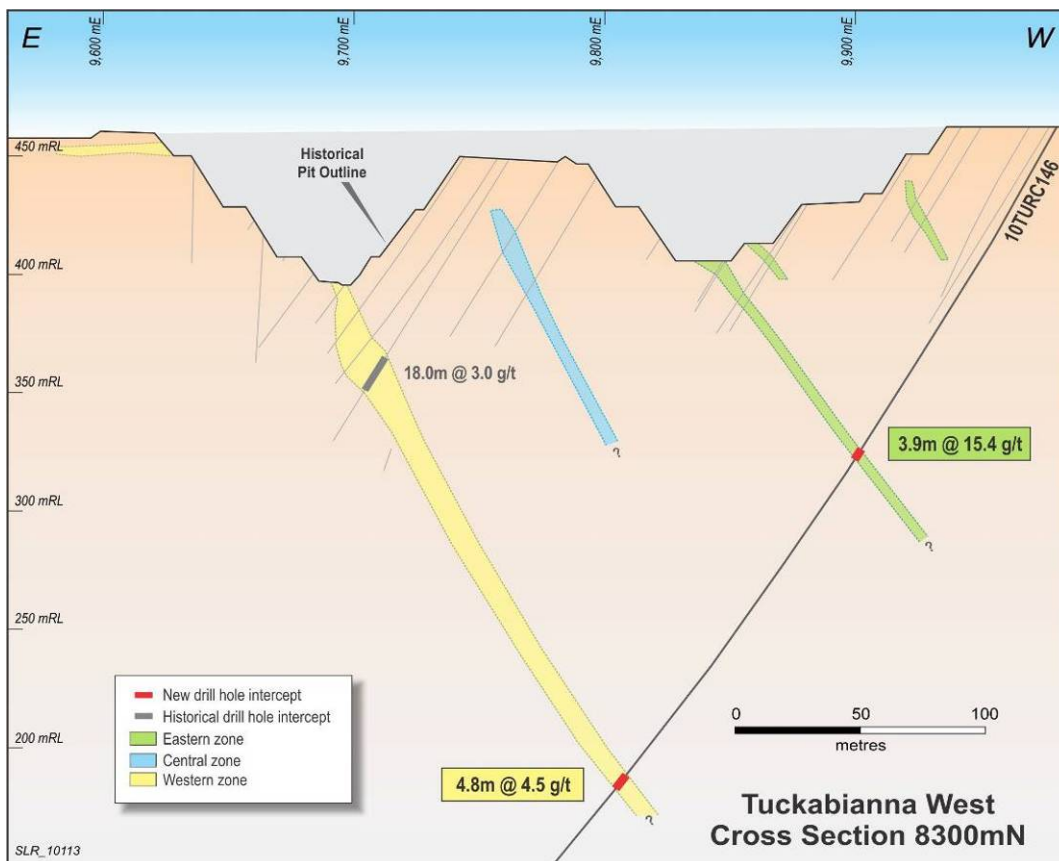


Figure 9: Tuckabianna West cross section 8300 mN showing interpreted mineralised zones.

Moyagee

The Moyagee Project (refer to figure 6) is based around the 35 km long Lena shear zone. Several deposits are located in this shear zone and already have a resource of 1.1 million tonnes at 7.0 g/t Au for 245,800 oz (refer to table 3). Mineralisation has been intersected along the shear zone for 5 km south of the Lena deposit and is currently subject to an ongoing drilling programme (refer to figure 10).

- Lena

Assay results were received in January 2011 from the ongoing infill drilling programme at Lena. These results indicate that the continuous high grade mineralisation in the upper portion of the Lena resource is amenable to open pit mining to a depth of ~65 metres.

Better results included:

- 9.0 metres at 10.3 g/t Au from 75 metres;
- 1.8 metres at 41.0 g/t Au from 77 metres;
- 2.0 metres at 16.9 g/t Au from 68 metres;
- 2.0 metres at 19.9 g/t Au from 49 metres;
- 7.0 metres at 5.0 g/t Au from 60 metres;
- 2.0 metres at 11.0 g/t Au from 84 metres;
- 2.0 metres at 9.5 g/t Au from 18 metres;
- 5.0 metres at 6.1 g/t Au from 50 metres;
- 2.3 metres at 13.6 g/t Au from 139 metres; and
- 2.0 metres at 11.7 g/t Au from 73 metres.

Refer to ASX announcement 14 December 2010 for further information.

Infill drilling is currently in progress for the Lena deposit to validate the underground mining potential and further extensional drilling is planned at Lena South and Leviticus.

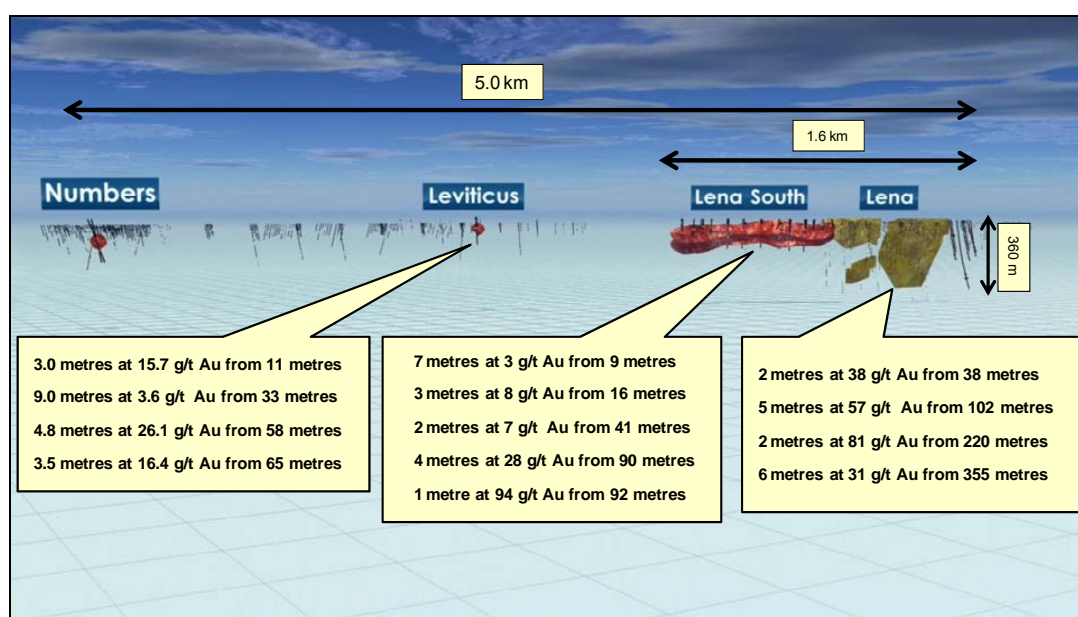


Figure 10: Schematic view of Lena, Lena South, Leviticus and Numbers.

Resources

The company's JORC Resource inventory as at 31 December 2010 totalled 3.0 million ounces as detailed below.

Deposit	Measured Resources			Indicated Resources			Inferred Resources			Total Resources		
	Ore t '000s	Grade g/t Au	Total Oz Au '000s	Ore t '000s	Grade g/t Au	Total Oz Au '000s	Ore t '000s	Grade g/t Au	Total Oz Au '000s	Ore t '000s	Grade g/t Au	Total Oz Au '000s
Daisy Milano	38.0	24.7	30.1	457.1	23.1	339.5	227.0	31.3	228.4	722.0	25.8	598.0
Daisy East	28.2	48.1	43.5	53.6	44.9	77.4	27.9	15.7	14.1	109.7	38.3	135.1
Christmas Flat	-	-	-	338.6	4.1	44.1	448.5	6.3	91.3	787.1	5.4	135.4
Haoma	-	-	-	-	-	-	109.3	18.7	65.6	109.3	18.7	65.6
Costello	-	-	-	81.2	3.3	8.6	128.2	3.1	12.8	209.4	3.2	21.4
Lorna Doone	-	-	-	-	-	-	111.0	4.0	14.3	111.0	4.0	14.3
Magic	-	-	-	749.2	4.1	98.3	1,070.9	5.2	178.0	1,820.1	4.7	276.3
Wombola Pit	-	-	-	132.2	2.6	11.1	171.0	2.9	15.7	303.0	2.8	26.8
Wombola Dam	-	-	-	125.1	2.6	10.3	432.0	3.1	43.2	557.2	3.0	53.5
Total Mount Monger	66.1	34.7	73.7	1937.1	9.5	589.2	2,725.6	7.6	663.3	4,728.7	8.7	1,326.2
Caustons	-	-	-	625.6	3.9	78.2	462.2	3.3	48.9	1,087.8	3.6	127.1
Caustons South	-	-	-	424.8	2.0	27.6	296.5	4.2	39.6	721.3	2.9	67.2
Tuckabianna West	-	-	-	1,658.0	2.2	117.3	1,822.0	2.9	169.9	3,480.0	2.6	287.2
Friars	-	-	-	-	-	-	402.0	1.9	24.6	402.0	1.9	24.6
Jasper Queen	-	-	-	-	-	-	175.0	2.6	14.6	175.0	2.6	14.6
Gilt Edge	-	-	-	63.0	3.0	6.0	33.0	5.2	5.5	96.0	3.8	11.6
Genesis	-	-	-	353.7	1.8	20.2	11.8	2.4	0.9	365.5	1.8	21.2
Exodus	-	-	-	457.4	1.6	23.7	101.3	2.8	9.0	558.7	1.8	32.6
Julies Reward	-	-	-	461.3	3.2	46.7	254.7	3.4	27.8	716.0	3.2	74.6
Sherwood	-	-	-	-	-	-	349.0	2.2	24.9	349.0	2.2	24.9
Jaffas Folly	-	-	-	6.0	4.3	0.8	202.0	1.4	9.1	208.0	1.5	9.9
Little John	-	-	-	-	-	-	1,201.0	1.8	69.5	1201.0	1.8	69.5
TMC/Katies	-	-	-	476.0	2.1	32.1	626.0	2.4	47.9	1,102.0	2.3	80.0
Total Tuckabianna	-	-	-	4,425.8	2.4	352.8	5,936.4	2.6	492.2	10,462.2	2.5	845.0
Comet	36.0	0.6	0.7	2,776.2	3.7	325.5	1,150.3	2.5	91.5	3,962.5	3.3	417.8
Moyagee	-	-	-	-	-	-	1,088.4	7.0	245.8	1,088.4	7.0	245.8
Total Murchison	36.0	0.6	0.7	7,302.0	2.9	678.3	8,175.2	3.2	829.6	15,513.2	3.0	1,508.6
Rothsay	-	-	-	-	-	-	591.2	7.0	132.9	591.2	7.0	132.9
Total Silver Lake	102.1	22.7	74.4	9,239.1	4.3	1,267.5	11,491.9	4.4	1,625.7	20,833.1	4.4	2,967.6

Table 3: December 2010 Resource Inventory

Rounding may give rise to unit discrepancies in this table

Finance

During the quarter Silver Lake invested in the future growth of the company including accelerated exploration activities at Mount Monger and the Murchison, development of the ventilation shaft at Daisy Milano and completed the acquisition of North Monger from Cortona Resources.

Half year unaudited pre-tax profit was A\$8.7 million (2009 A\$2.2 million).

Cash & cash equivalents at the end of the quarter totalled A\$27.8 million comprising:

- ▶ A\$24.0 million in cash; and
- ▶ A\$3.8 million in bullion on hand.

The company remains debt free.

Cash Flow (Unaudited)	Dec 2010 Qtr (A\$ Million)
<u>Revenue Received & Gold Bullion on Hand¹</u>	<u>20.4</u>
Payments to Operating Suppliers & Employees	(10.3)
Royalties	(0.6)
<u>Operating Cash Flow</u>	<u>9.5</u>
Exploration	(3.7)
Capital Development - Underground	(2.4)
Waste Material Movement - Open Pit	(2.6)
Capital Works	(0.7)
Ventilation Shaft	(1.6)
North Monger Acquisition	(2.0)
<u>Cash Flow from Operations</u>	<u>(3.5)</u>
Business Development	(0.4)
Corporate Overheads	(0.6)
<u>Net Cash Flow</u>	<u>(4.5)</u>
Opening Cash in Bank & Bullion	32.3
<u>Closing Cash in Bank & Bullion</u>	<u>27.8</u>

Table 4: Statement of Cash Flows

Notes to Table 4 and cash on hand:

1: Revenue received in cash was A\$20.5 million. Gold bullion on hand is the difference in value between bullion on hand at the end of September 2010 quarter and bullion on hand at the end of the December 2010 quarter.

Corporate

Investor Relations:

- ▶ Silver Lake presented at the following investor conferences during the quarter:
 - ▶ 19 October 2010 at the Proactive Investor conference in Sydney.
 - ▶ 20 October 2010 at the AMEC one2one conference on the Gold Coast.
- ▶ Silver Lake was awarded 2010 Gold Miner of the Year from the Gold Mining Journal for the second consecutive year.



- Issued Share Capital

Class of Securities	Issued capital
Fully Paid Ordinary Shares	178,882,838

- Unlisted Options

Unlisted Options	Exercise price	Expiry date
24,000,000	A\$0.30	31 December 2012
240,000	A\$0.30	29 January 2013

For more information about Silver Lake and its projects please visit our web site at www.silverlakeresources.com.au.

For further information please contact

Les Davis
Managing Director
+61 8 6313 3800
contact@silverlakeresources.com.au

About Silver Lake Resources Ltd:

Silver Lake is an ASX 300 gold producing and exploration company with a resource base of 3.0 million oz in highly prospective regions including the Mount Monger goldfield and the Murchison. Silver Lake's strategy is to develop large production centres at Mount Monger and at the Murchison with multiple mines at each centre.

Silver Lake's Mount Monger Operation contains the Daisy Milano and Daisy East underground mines and the Costello open pit located 50 km south east of Kalgoorlie.

Mount Monger has additional multi mine potential underpinned by emerging open pit production from Magic, Wombola Dam and Wombola Pit deposits. Furthermore the extension of the Rosemary and Haoma lodes show potential as near term production sources.

Gold ore from Mount Monger is transported to Silver Lake's 600,000 tpa Lakewood Gold Processing Facility located 5 km south east of Kalgoorlie and 45 km from the Daisy Milano mine.

In the Murchison ongoing exploration is focusing on extending current resources that have previously been constrained by limited drilling particularly below 100 metres depth. Our strategy is to delineate sufficient resources to sustain a 100,000 oz per annum operation.

Silver Lake's exploration programme is targeting¹ 5 million oz Au in resource.

Competent Person's Statement

The information in this report that relates to Exploration Results and Mineral Resources is based on information compiled by Mr Christopher Banasik who is a Member of the Australasian Institute of Mining and Metallurgy. Mr Banasik is a full time employee of Silver Lake Resources Ltd, and has sufficient experience which is relevant to the style of mineralisation under consideration to qualify as a Competent Person as defined in the 2004 edition of the JORC Code. Mr Banasik has given his consent to the inclusion in the report of the matters based on the information in the form and context in which it appears.

1: Information that relates to exploration targets refers to targets that are conceptual in nature, where there has been insufficient exploration to define a Mineral Resource and it is uncertain if further exploration will result in the determination of a Mineral Resource.