

# EXPLORING THE KOMBAT COPPER TREND

## OTAVI MOUNTAIN LAND, NORTHERN NAMIBIA

**Africa Down Under Conference**  
Perth, Western Australia

**August 2013**

ASX Code - SBR



# DISCLAIMER & DECLARATION

explore extend extract

This presentation has been prepared by Sabre Resources Ltd (“SBR”) as a summary of the company’s exploration and development activities, with particular reference to the Otavi Mountain Land Copper & Base Metals Project (‘OML’) in Namibia.

## No Offer of Securities

The presentation is not, and should not, be considered as an offer or invitation to subscribe for, or purchase any securities in SBR, or as an inducement to make an offer or invitation with respect to those securities. No agreement to subscribe for securities in SBR will be entered into on the basis of this presentation.

## Forward Looking Statements

This presentation contains certain forward looking statements which have not been based solely on historical facts but, rather, on SBR’s current expectations about future events and on a number of assumptions which are subject to significant uncertainties and contingencies many of which are outside the control of SBR and its directors, officers and advisers.

## Reliance on Third Party Information

Due care and attention has been taken in the preparation of this presentation. However, the information contained in this presentation (other than as specifically stated) has not been independently verified nor has it been audited. Accordingly, the company does not warrant or represent that the information contained in this presentation is accurate or complete. To the fullest extent permitted by law, no liability, however arising, will be accepted by SBR or its directors, officers or advisers, for the fairness, accuracy or completeness of the information contained in this presentation.

## Competent Person Declaration

The information in this presentation that relates to Exploration Results, Mineral Resources or Ore Reserves is based on information compiled by Mr Timothy Putt of Sabre Resources Ltd, who is a member of The Australasian Institute of Geoscientists. Mr Putt has sufficient experience that is relevant to the style of mineralisation and type of deposit under consideration and to the activity that he is undertaking to qualify as a Competent Person as defined in the 2004 Edition of the “Australasian Code for Reporting of Exploration Results, Mineral Resource and Ore Reserves”. Mr Putt consents to the inclusion in the presentation of the matters based on his information in the form and context in which it appears.

**Sabre Resources** (SBR) is an ASX-listed exploration & development company. Our focus is the Otavi Mountain Land (OML) Base Metal Project in northern Namibia, southwest Africa.

*Sabre's exploration philosophy:*

**explore** the OML Project for copper and zinc-lead

**extend** our resource inventory

**extract** metals for the benefit of all stakeholders



# LOCATION — NAMIBIA

explore   extend   extract

- Pro-mining and progressive government
- Long history of production
- Significant metal endowment
- 'Tier One' assets include:
  - Rossing** Uranium Mine, Rio Tinto – *Operational*
  - Skorpion** Zinc Mine, Vedanta – *Operational*
  - Namibian Diamonds, **NAMDEB** – *Operational*
  - Husab** Uranium Project, SwakopUranium – *Development*
- Outstanding infrastructure around our Otavi Mountain Land (OML) project
  - Located in north of Namibia
  - Rail to port
  - Roads
  - Power, water and communications
  - One of only five operational copper smelters in Africa, at Tsumeb





# GEOLOGICAL SETTING

explore

extend

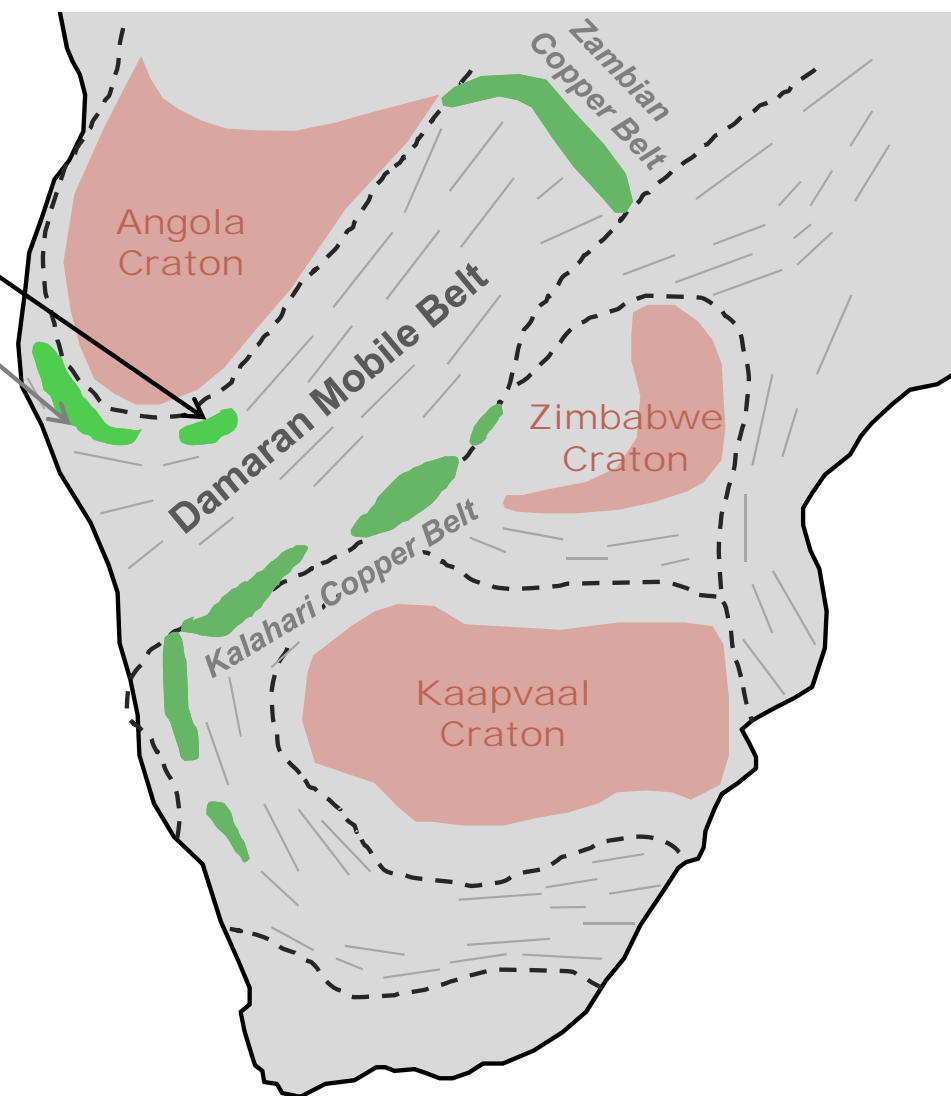
extract



## Otavi Mountain Land Base Metal Project

Namib Copper Belt

- The Pan-African Mobile Belts host some of the world's most important and high-grade copper deposits. The Damaran Mobile Belt contains:
  - the **Zambian Copper Belt**,
  - the **Kalahari Copper Belt**, and
  - the **Namib Copper Belt**.
- The OML lies on the eastern end of the **Namib Copper Belt**, on the northern margin of the Damaran Mobile Belt, in southern Africa.



# THE OTAVI MOUNTAIN LAND

explore extend extract

- The Otavi Mountain Land (OML) has a history of mining dating back to the mid-19<sup>th</sup> century when copper was first discovered in the region,
- It hosts a number of distinctive and 'high-value' mineral deposits including:

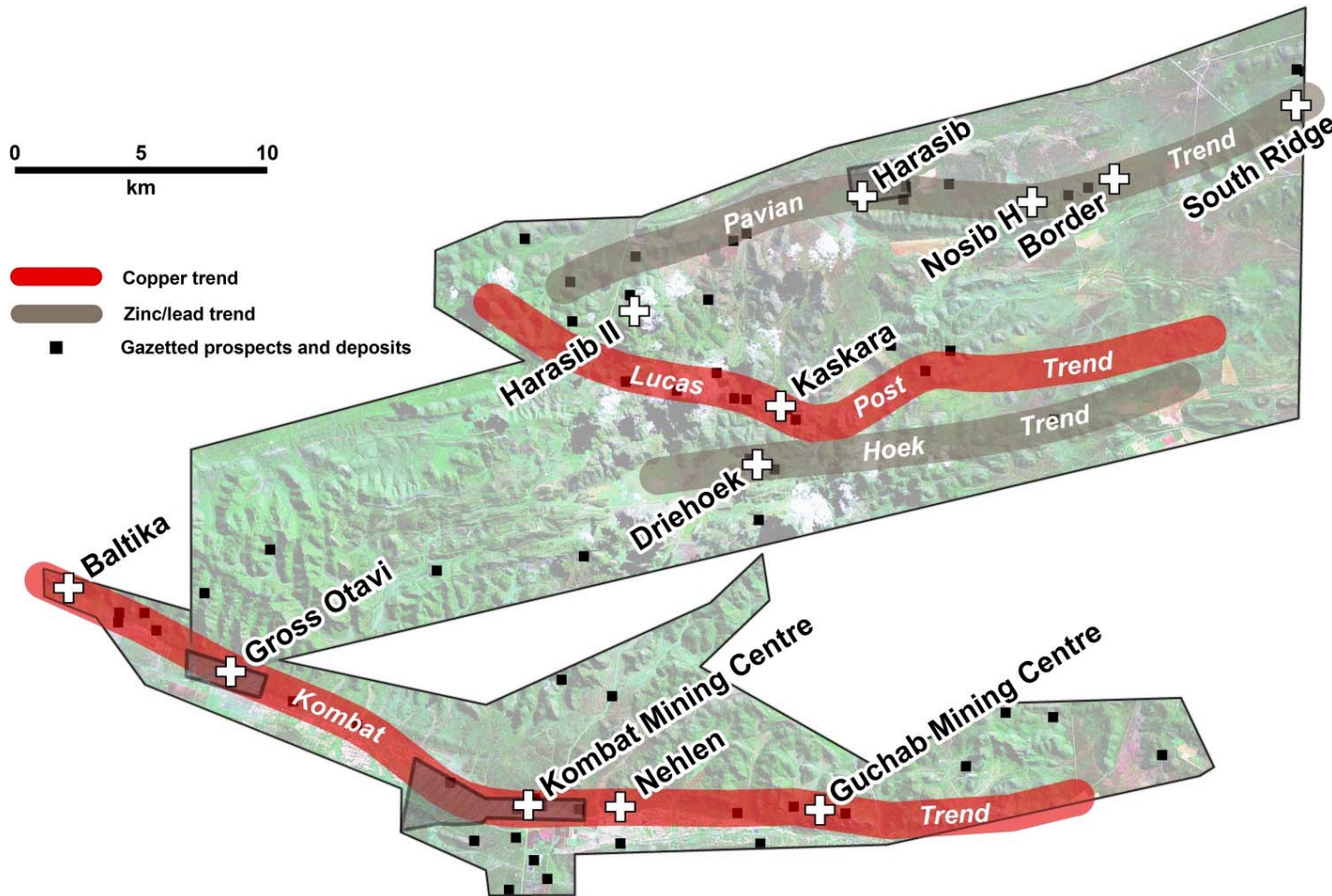
<b>Tsumeb</b>	<b>&gt;25 Mt @ &gt;5% Copper</b>
<b>Kombat</b>	<b>&gt;12 Mt @ &gt;3% Copper</b>
<b>Berg Aukas</b>	<b>&gt;3 Mt @ &gt;17% Zinc</b>
<b>Abenab</b>	<b>&gt;2 Mt @ &gt;1% Vanadium</b>

- The OML is serviced by network of well maintained and high quality infrastructure,
- The Tsumeb Mine & Smelter Complex lies only 45 km to the north of the project area and is one of only five operating copper smelters in Africa



# SABRE'S OML PROJECT AREA

explore extend extract



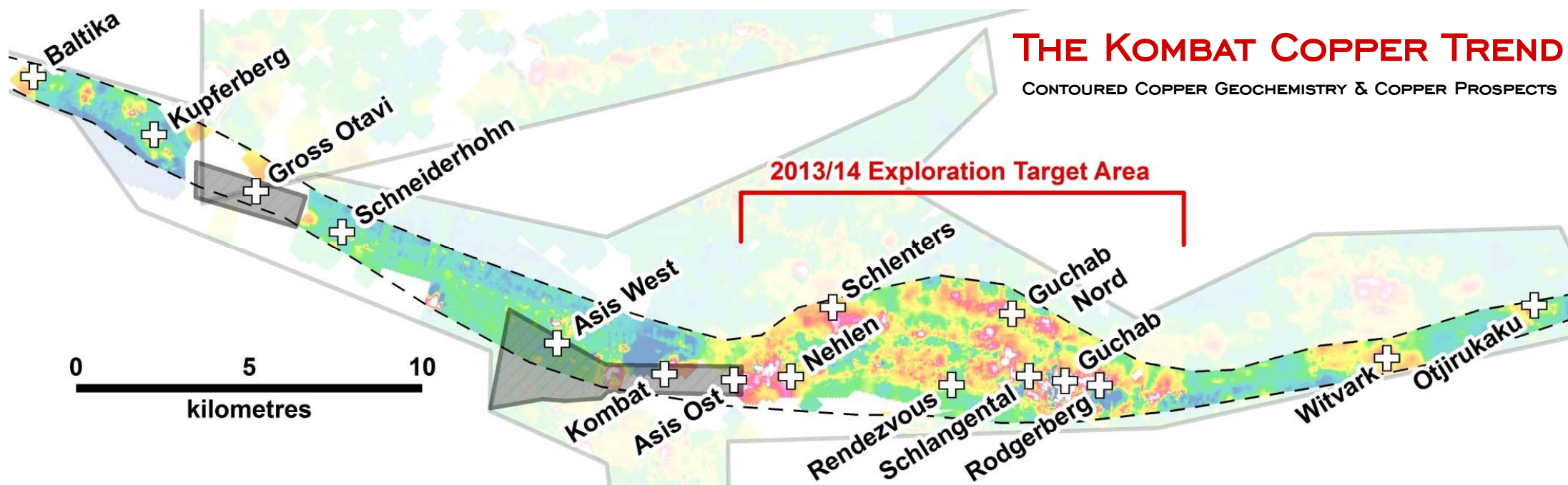
- Two granted EPLs cover over 820 km<sup>2</sup>,
- Four significant base-metal trends, including two copper-rich trends:
  - **Kombat Cu-Ag Trend**
  - **Lucas Post Cu-Pb-V Trend**
- Both copper trends cover more than 25km of strike and are highly mineralised,
- Sabre's exploration is now focused on the **Kombat Copper Trend** and the delineation of resources at the **Guchab Mining Centre**,
- Exploration continues to generate targets throughout the project area.

## PROSPECTS & DEPOSITS WITHIN SABRE'S OTAVI MOUNTAIN LAND PROJECT



# KOMBAT COPPER TREND

explore extend extract



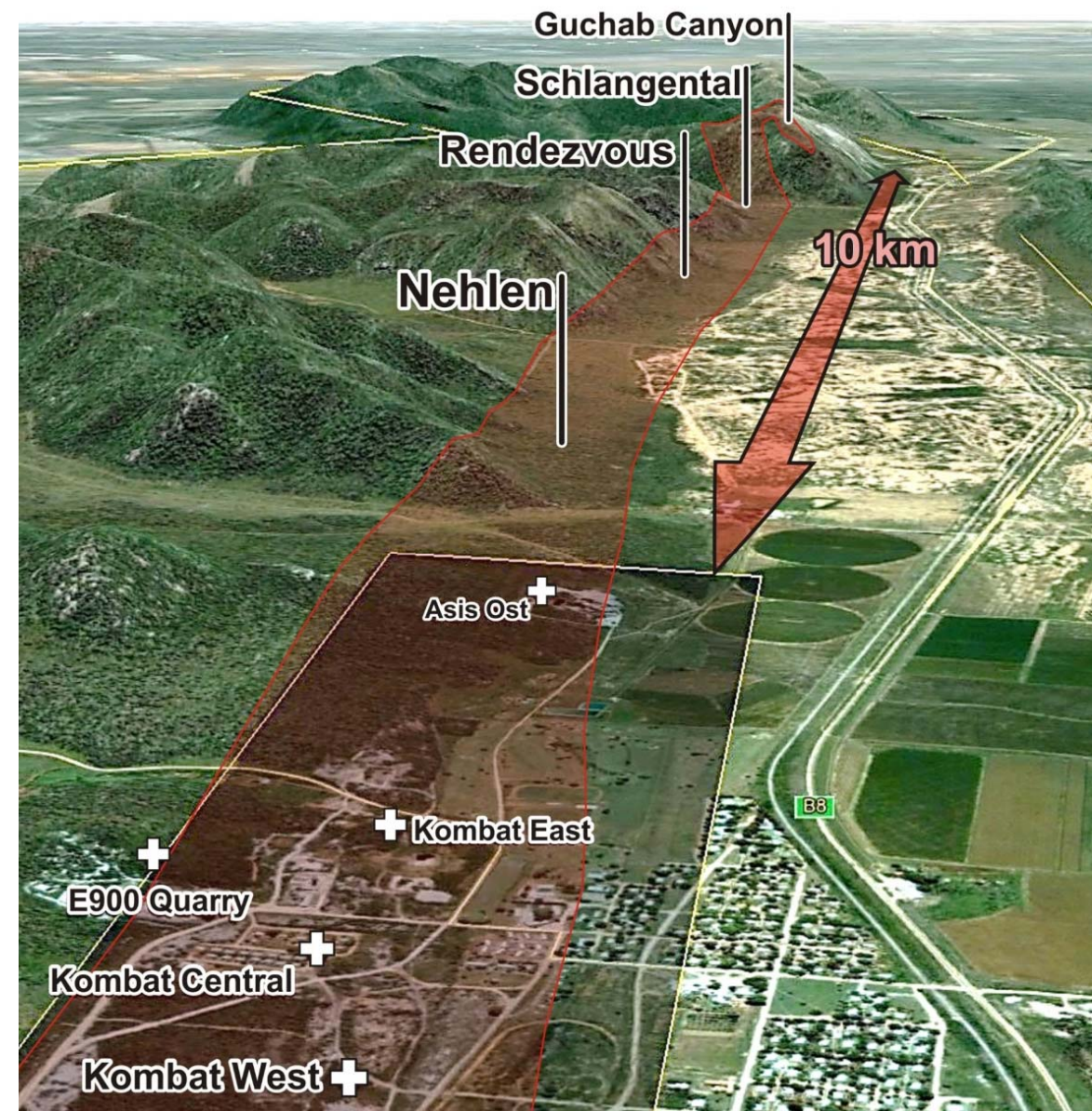
- The Otavi Valley hosts the copper-rich Kombat Trend that takes in high-grade historical copper mines, including Kombat & Gross Otavi (excised), as well as Sabre's **Guchab Mining Centre**,
- Sabre's lease takes in **over 40 km of copper-rich stratigraphy**,
- Sabre's main focus in 2013 has been the exploration and delineation of resources at the **Guchab Canyon**.



# KOMBAT EAST TARGET AREA

explore   extend   extract

- Covers more than 10km of the Kombat Copper Trend,
- Includes the extensions to the Kombat Copper Mine structure & stratigraphy,
- Hosts a number of high priority copper targets including:
  - **Eisernenhut** (*sampling*)
  - **Guchab Canyon** (*resource drilling*)
  - **Schlangental** (*drill testing*)
  - **Rendezvous** (*sampling*)
  - **Nehlen** (*evaluation*)
- The Company believes that this area hosts significant copper resources,
- Exploration focus on the **Guchab Mining Centre**.



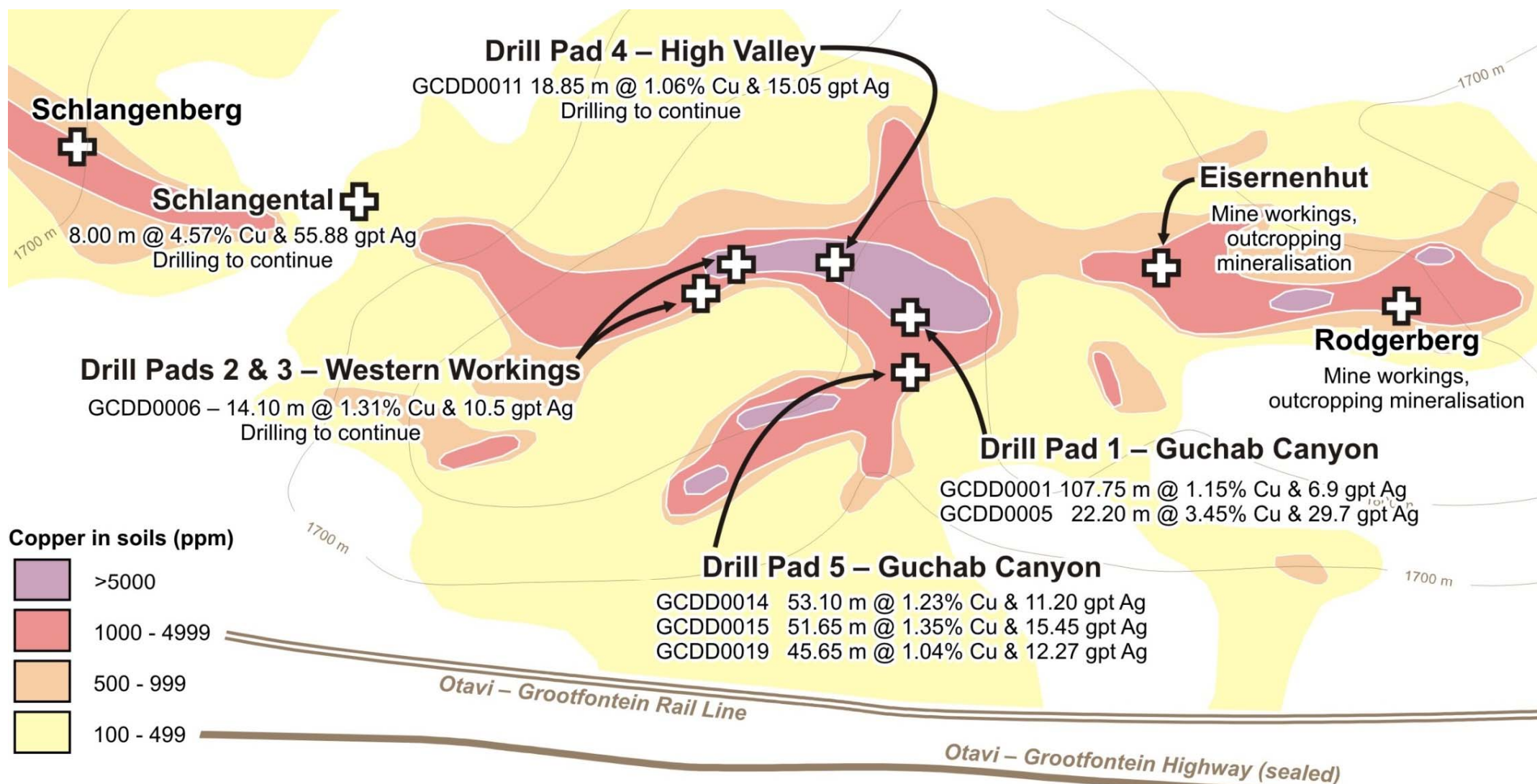


# GUCHAB MINING CENTRE ('GMC')

explore

extend

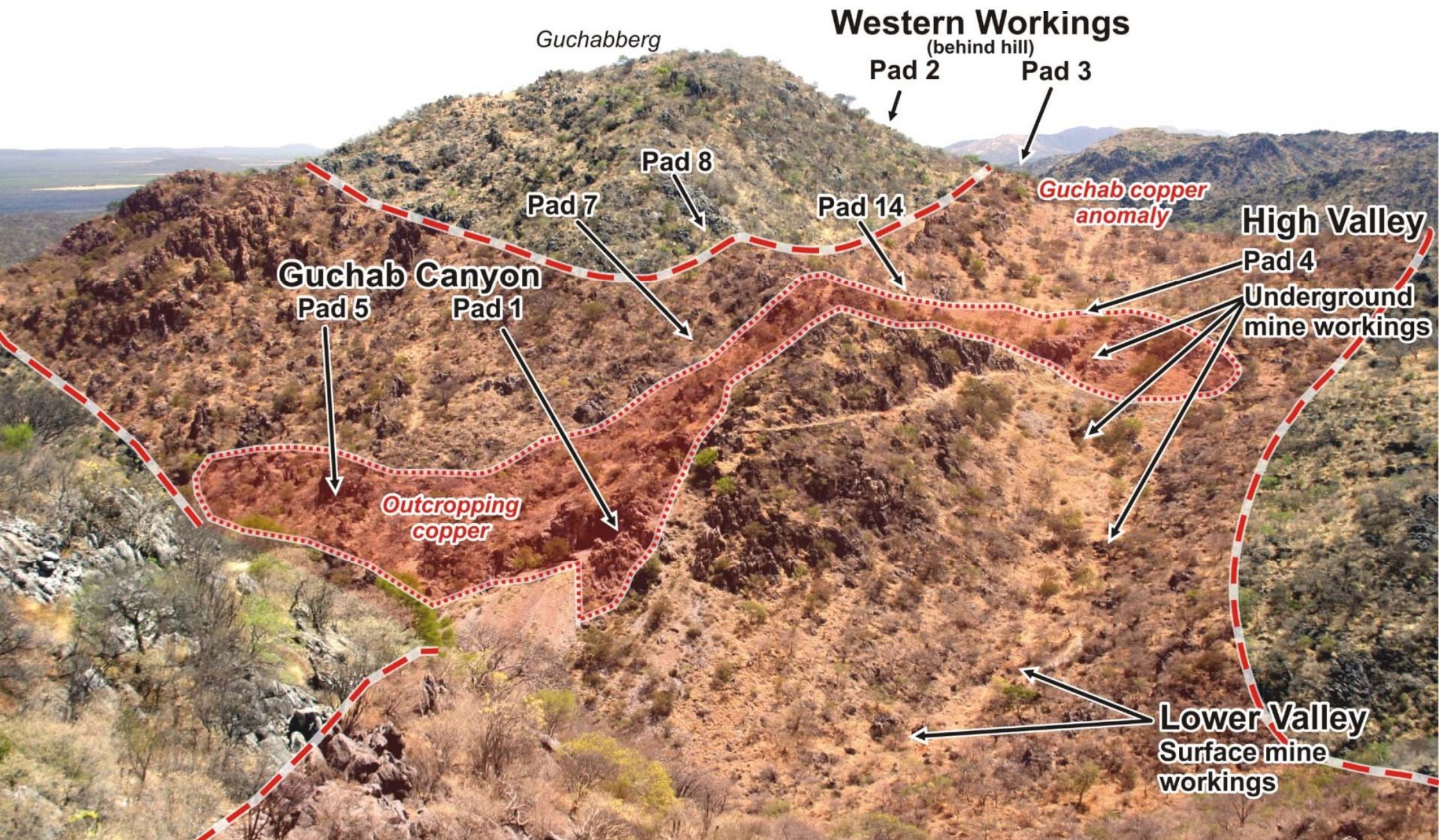
extract



Guchab Mining Centre, Kombat Copper Trend, Otavi Mountain Land.



# GMC - GUCHAB CANYON





# GUCHAB CANYON - DRILLING

explore

extend

extract

- Outcropping, breccia hosted copper mineralisation in the Guchab Canyon
  - more than 350 m of strike
  - presently drilling
- Recent drilling in the lower Guchab Canyon:
  - GCDD0014 **53.10m @ 1.23% Cu & 11.2 g/t Ag** from Surface
  - GCDD0015 **51.85m @ 1.35% Cu & 15.5 g/t Ag** from 0.3 metres
  - GCDD0025 **58.62m @ 1.38% Cu & 28.3 g/t Ag** from 65.4 metres
- The exploration is now testing the strike extensions to mineralisation through the High Valley:
  - GCDD0011 **18.85m @ 1.06% Cu & 15.05 g/t Ag** from 42.2 metres
- Two diamond drill rigs now active targeting:
  - near surface mineralisation (0-100 metres depth)
  - mineralisation at depth (>100 metres depth).



# OTHER KOMBAT EAST TARGETS

explore extend extract

## Schlangental

- Open pit workings in valley immediately west of Guchab,
- Initial sampling and drilling:
  - 8.00 m @ 4.57% Cu & 55.88 g/t Ag (drill intercept)**
  - 42.00 m @ 3.58% Cu & 18.3 g/t Ag (channel)**
  - 15.00 m @ 4.21% Cu & 28.1 g/t Ag (channel)**
- Exploration to continues.

## Eisernenhut ('Iron Hat')

- Identified by SBR to the northeast of the Guchab Canyon,
- High-grade malachite-chalcocite-quartz stockwork in an iron-silica rich cap, on a prominent hill overlooking the Guchab Canyon,
- Minimal previous exploration although some early 1900s 'high grade' mining,
- Access & services presently being installed in preparation for drilling.



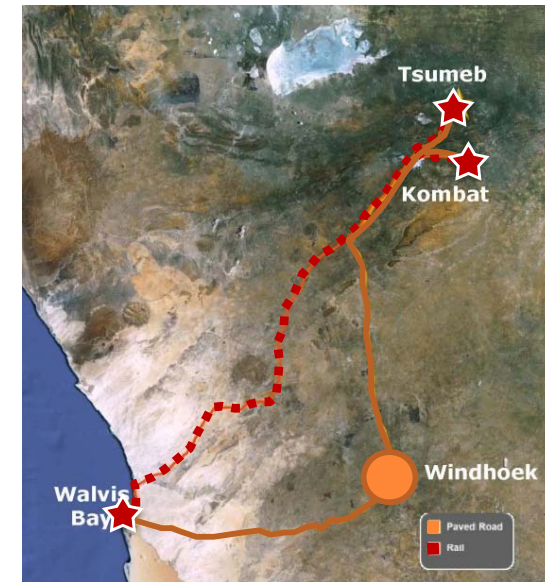


# OML - INFRASTRUCTURE

explore   extend   extract

A key attraction of the OML is its long history of mining, with the associated culture and processing infrastructure. This includes:

- **Tsumeb Copper Smelter (Dundee PM)** – US\$145 million upgrade in progress, including work to double capacity to process 240,000 tonnes of concentrates per annum.
- **Tsumeb Concentrator (Weatherly International)** – on ‘care & maintenance’, largely intact 560,000 tonnes per annum circuit. Closed in 2008 due to low copper prices.
- **Kombat Concentrator (Kombat Copper)** – detailed engineering review underway with a view to restarting the project. It is a 400,000 tonne per annum circuit, closed in 2008 due to low copper prices.
- **Rail** – network of rail through region, from the port at Walvis Bay to Tsumeb & Grootfontein (with a dedicated siding at Guchab).
- **Roads** – paved and ‘made’ gravel roads throughout region.
- **High Voltage Power** - power throughout the OML region, sourced internally and from neighbouring countries including Zambia.





## Sabre Resources

- is leading the renaissance of exploration in the region with an active and highly successful exploration program.
- holds an extensive ground position in the established Otavi Mountain Land copper province with outstanding infrastructure.
- recent exploration has resulted in the identification and drill testing of a number of targets within the Guchab Mining Centre.
- is progressing through resource delineation at Guchab Canyon, with a initial exploration target of:

**5-10 million Tonnes @ 1-3% Copper & 10-30 gpt Silver\***

\*The potential quantity and grade of the Guchab deposits is conceptual in nature, as Sabre has determined that insufficient work has been undertaken to define a mineral resource and it is uncertain if further exploration will result in the determination of a mineral resource. The 'exploration target' is based upon the success of the drilling program to date and the mapped extents of copper mineralisation in the Guchab Canyon.

- remains well funded and is focused on the evolution of the company's projects in Namibia.



# CORPORATE OVERVIEW

explore extend extract

Sabre Resources is a **copper focused exploration company** with a developing portfolio of base metal assets in the highly prospective Otavi Mountain Land of northern Namibia.

ASX Code: SBR

Issued Capital:	<b>226.47 Million</b>
Options:	<b>3.75 Million</b>
Share Price (23/8/13):	<b>\$0.093</b>
Market Cap:	<b>~A\$21 Million</b>
Cash (at 31/7/13):	<b>\$6.5 Million</b>
Debt:	<b>Nil</b>

Experienced Board & Management

**Tim Putt** – Chief Executive Officer

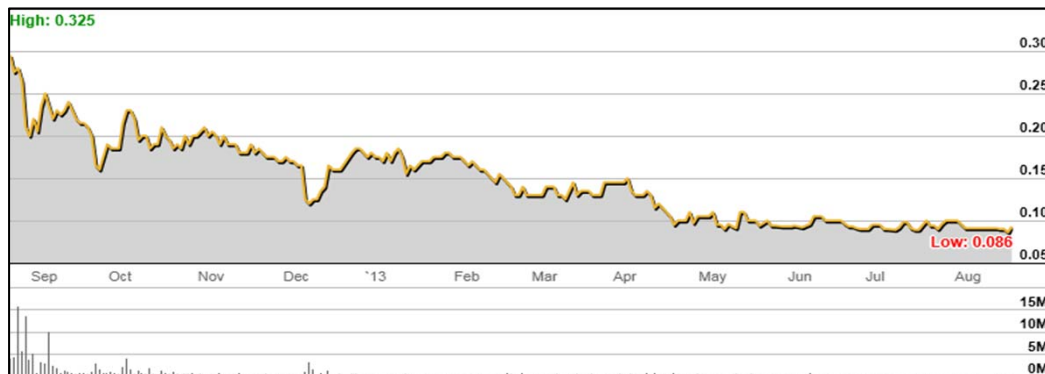
**Dr Matthew Painter** – GM Exploration

**Luke Marshall** – Resource Geologist

**David Zukerman** – Executive Director

**Michael Scivolo** – Non-Executive Director

**Jonathan Downes** – Non-Executive Director



SBR - Share Price & Volumes (1 Year)

## CONTACT

Sabre Resources Ltd,  
Lvl 1, 8 Parliament Place,  
West Perth, WA  
Phone: +61 8 9481 7833  
Email: [info@sabresources.com](mailto:info@sabresources.com)

[www.sabresources.com](http://www.sabresources.com)

At Africa Down Under 2013:  
Stand 85 in the Golden Ballroom

ASX Code - SBR

