



## ASX ANNOUNCEMENT / MEDIA RELEASE

ASX:ABU

April 11<sup>th</sup>, 2011

### Updated Investor Presentation

ABM is pleased to announce that Managing Director – Mr Darren Holden is presenting at the 20:20 Investors Series on Wednesday in Sydney.

The presentation focuses on the Twin Bonanza Gold Camp, which includes the recently released Maiden Inferred Resource of 1.67 million ounces of gold (also refer release 21.2.2011) on the Buccaneer Porphyry Gold Prospect.

#### About ABM Resources NL

ABM Resources is a mineral exploration company focused on gold discovery in the Tanami-Arunta regions of the Northern Territory, Australia. The Company is one of the largest exploration license / license application holders in Australia. The Company has an aggressive exploration approach and is well funded for multiple-target testing with multiple rigs in 2011.

Signed

A handwritten signature in black ink, appearing to read 'Darren Holden', with a horizontal line underneath.

Darren Holden – Managing Director

#### For Further Information Please Contact

Jutta Zimmermann  
CFO / Company Secretary  
+61 8 9423 9777

Darren Holden  
Managing Director  
+61 8 9423 9777

Berdine Mastaglia  
Investor Relations Manager  
+61 8 9423 9777

---

#### ABM RESOURCES NL

Level 1, 141 Broadway Nedlands Western Australia 6009 . [www.abmresources.com.au](http://www.abmresources.com.au)

Email: [admin@abmresources.com.au](mailto:admin@abmresources.com.au) . Tel: +61 8 9423 9777 . Fax: +61 8 9423 9733

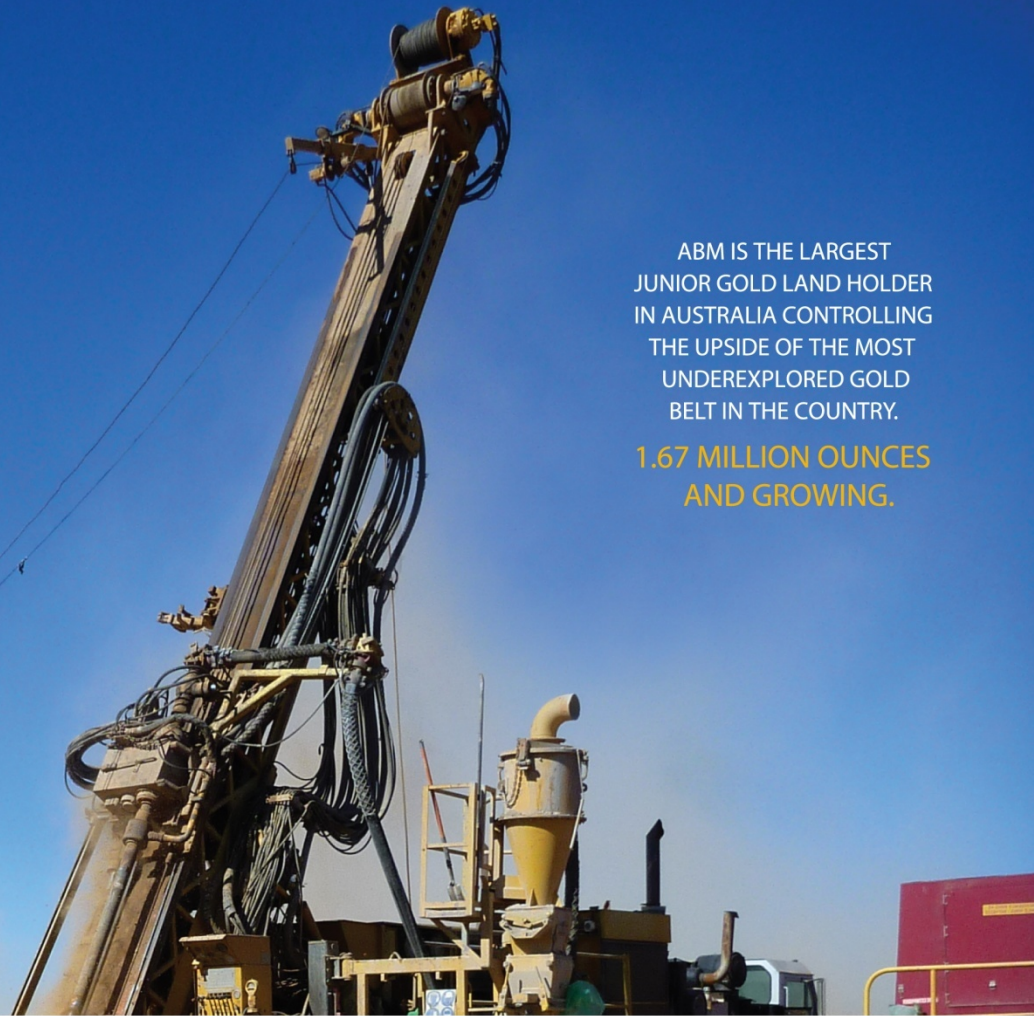
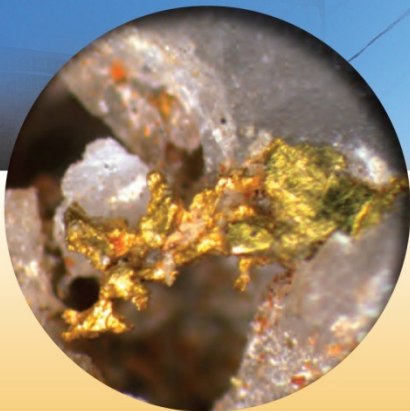
ABN: 58 009 127 020

“ Unlocking the potential  
of Australia’s  
Final Frontier ”

Performance, Integrity, Leadership,  
Focus and Simplicity

ABM IS THE LARGEST  
JUNIOR GOLD LAND HOLDER  
IN AUSTRALIA CONTROLLING  
THE UPSIDE OF THE MOST  
UNDEREXPLORED GOLD  
BELT IN THE COUNTRY.

1.67 MILLION OUNCES  
AND GROWING.

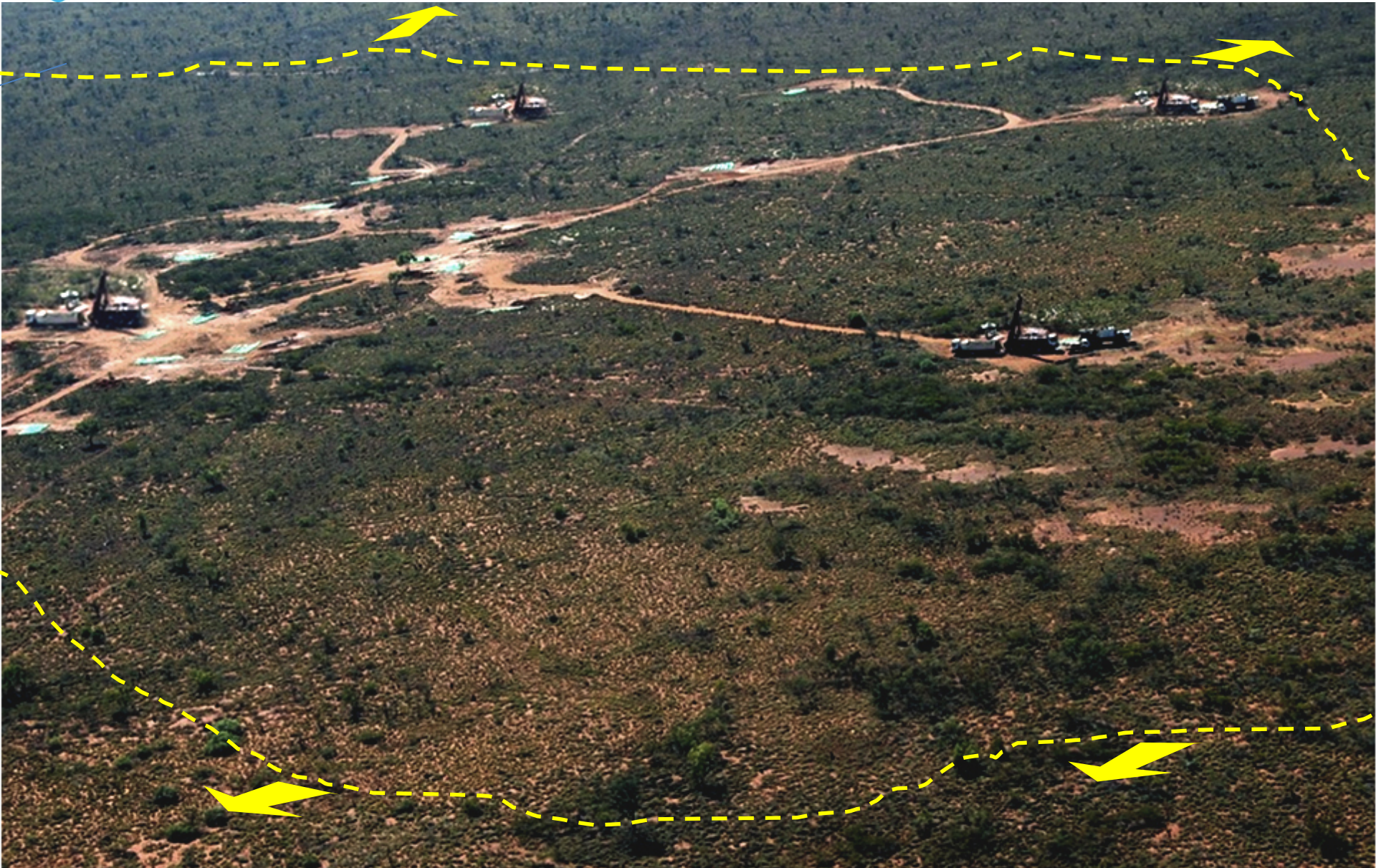


April 2011

**ABM RESOURCES NL**  
**(ASX:ABU)**

20:20 Investors Series

# 1.67 Million Ounces of GOLD and Growing



What 4 drill rigs look like montaged on the **Buccaneer Gold Porphyry Deposit**

## **DISCLAIMER**

This presentation has been prepared by ABM Resources NL (“ABM” or the “Company”). It should not be considered as an offer or invitation to subscribe for or purchase any securities in the Company or as an inducement to make an offer or invitation with respect to those securities. No agreement to subscribe for securities in the Company will be entered into on the basis of this presentation.

This presentation contains forecasts and forward looking information. Such forecasts and information are not a guarantee of future performance, involve unknown risks and uncertainties. Actual results and developments will almost certainly differ materially from those expressed or implied. ABM has not audited or investigated the accuracy or completeness of the information, statements and opinions contained in this presentation. Accordingly, to the maximum extent permitted by applicable laws, ABM makes no representation and can give no assurance, guarantee or warranty, express or implied, as to, and take no responsibility and assume no liability for, the authenticity, validity, accuracy, suitability or completeness of, or any errors in or omission from, any information, statement or opinion contained in this presentation.

You should not act or refrain from acting in reliance on this presentation material. This overview of ABM does not purport to be all inclusive or contain all information which its recipients may require in order to make an informed assessment of the Company’s prospects. You should conduct your own investigation and perform your own analysis in order to satisfy yourself as to the accuracy and completeness of the information, statements and opinions contained in this presentation and making any investment decision.

## **Technical Statement / Competent Persons Statement**

Information in this document that relates to Exploration Results is based on information compiled by Mr Darren Holden who is a Member of The Australasian Institute of Mining and Metallurgy and is based on results collected by ABM Resources NL, resource estimation by SRK (Australasia) Pty Ltd and on databases and compilations supplied by Newmont Asia Pacific and Tanami Gold. Mr Holden is a full time employee of ABM Resources and has sufficient experience which is relevant to the style of mineralisation and type of deposits under consideration and to the activity which he is undertaking to qualify as a Competent Person as defined in the 2004 Edition of the “Australasian Code for Reporting Exploration Results, Mineral Resources and Ore Reserves”. Mr Holden consents to the inclusion in the documents of the matters based on this information in the form and context in which it appears.

Other than recent drill results, metallurgical test work and surface samples from the Hyperion Project, Old Pirate and Buccaneer Prospects, all surface samples and drill results reported are to be considered historic and compiled with exploration industry best practice for storage and security of data. However, in many cases samples are not available for reassy checking.

Refer to previous Company Press-Releases for full resource estimation details, drill hole details, and intercept calculations. A full list is provided in Appendix 1.

# We’ve Only Just Begun

- **November 2009** New board appointed at AGM.
- **December 2009** Closed deal with Tanami Gold to acquire projects.
- **January 2010** Recruiting on-ground team.
- **March 2010** Closed deal with Newmont to acquire projects – ABM becomes the largest EL/ELA land holder for junior gold exploration in Australia.
- **May 2010** Discovery announced at Sabre prospect (Stafford) with 35m @ 2.02g/t gold.
- **June 2010** Drilling commenced at Twin Bonanza.
- **July 2010** Announced first high grade results from Old Pirate with 35m @ 6.35g/t gold and 5m @ 274g/t gold.
- **August 2010** First results from Buccaneer Porphyry with 123m @ 1.04g/t gold.
- **September 2010** Drilled 202m @ 1.0g/t gold and 136m @ 1.12g/t gold at Buccaneer Porphyry.
- **October 2010** Oversubscribed share placement / capital raising placing \$10.75 Million at 3.5 cents.
- **October 2010** New higher grade zone discovered at Buccaneer Porphyry 67m @ 2.07g/t gold.
- **January 2011** Results announced from Hyperion Gold Project.
- **January 2011** Best results ever from Buccaneer with 81m @ 2.03g/t gold – new WESTERN ZONE identified.
- **Jan/Feb 2011** Additional 28 targets identified at Twin Bonanza Gold Camp.
- **February 2011** **MAIDEN RESOURCE FOR BUCCANEER: 1.67 Million Ounces of Gold.**  
**» In ground Discovery Cost for Buccaneer 2010 less than \$3 per ounce.**
- **April 2011** 99.5% recoveries recorded from metallurgical testing at Old Pirate.

# Structure

**ASX:ABU**

**Shares on issue = 2,489,471,853**

**Options (varying date / price) = 747M @ vwap 1.6 Cents (+\$11.9M)**

**Cash (at December 2011) = ~\$11.5M**

**Market Capitalisation (3.5 cents) = ~\$87M**

**Fully Diluted Enterprise Value (3.5 cents) = ~\$89M**

**Chairman**

**Mike Etheridge**

**Managing Director**

**Darren Holden**

**Exec Director**

**Imants Kins**

**Non-Exec Director**

**Graeme Sloan**

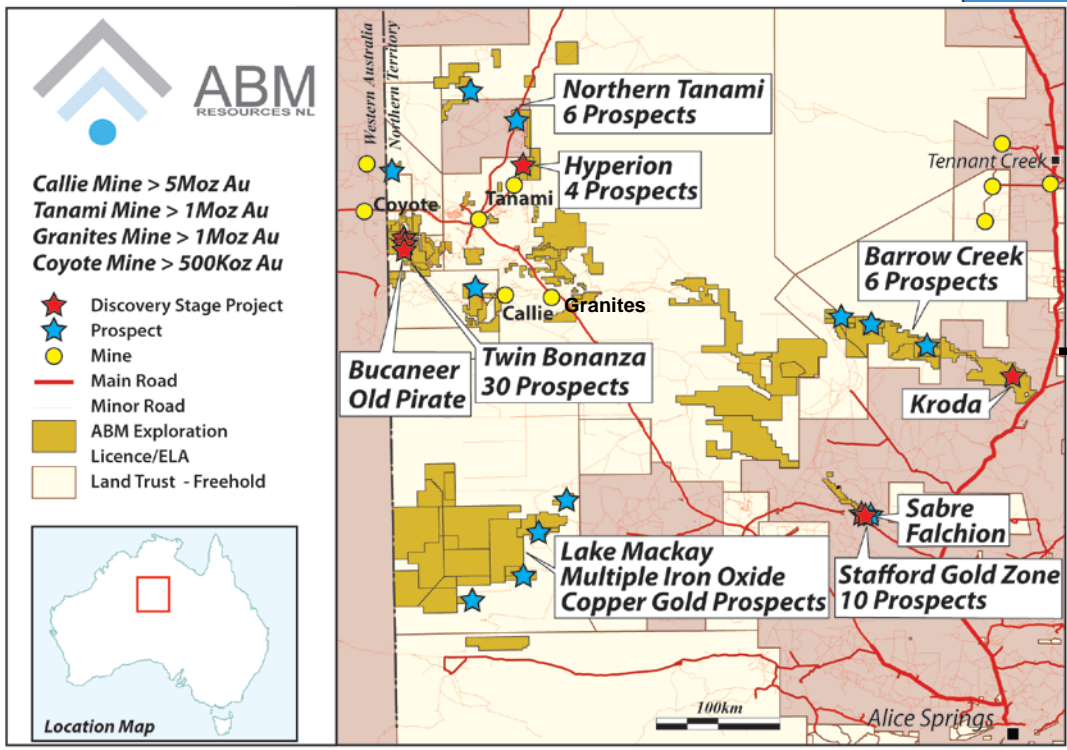
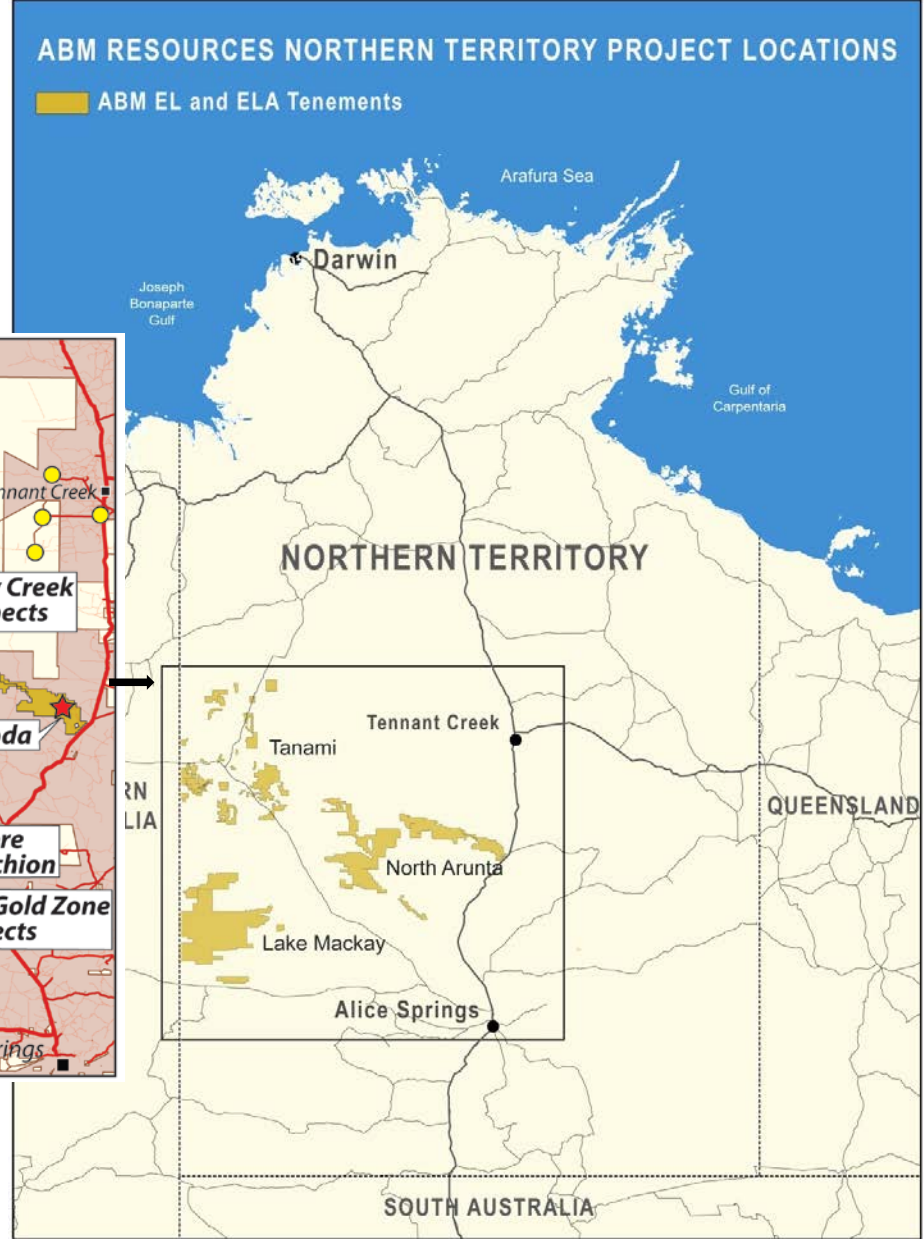
**Company Secretary / CFO**

**Jutta Zimmermann**

Tanami Exploration (Tanami Gold)	<b>20.41%</b>
HSBC Custody Nominees	<b>5.37%</b>
Jemaya Pty Ltd	<b>4.00%</b>
JP Morgan Investments	<b>3.63%</b>
Sun Hung Kai Investments	<b>2.95%</b>
E. Radford	<b>2.50%</b>
N. Featherby	<b>2.36%</b>
National Nominees	<b>2.00%</b>
Citicorp Nominees	<b>1.97%</b>
CS Fourth Nominees	<b>1.46%</b>
Geocrust Pty Ltd	<b>1.06%</b>
Strathdale Pty Ltd	<b>1.00%</b>
Darren Holden	<b>0.80%</b>
Ascel PL	<b>0.80%</b>
Gold Elegant Investments (HK)	<b>0.80%</b>
<b>Total Top 15</b>	<b>51.11%</b>

**ABM’s Board and Management have a proven track record of grass-roots discoveries.**

# Where are we?



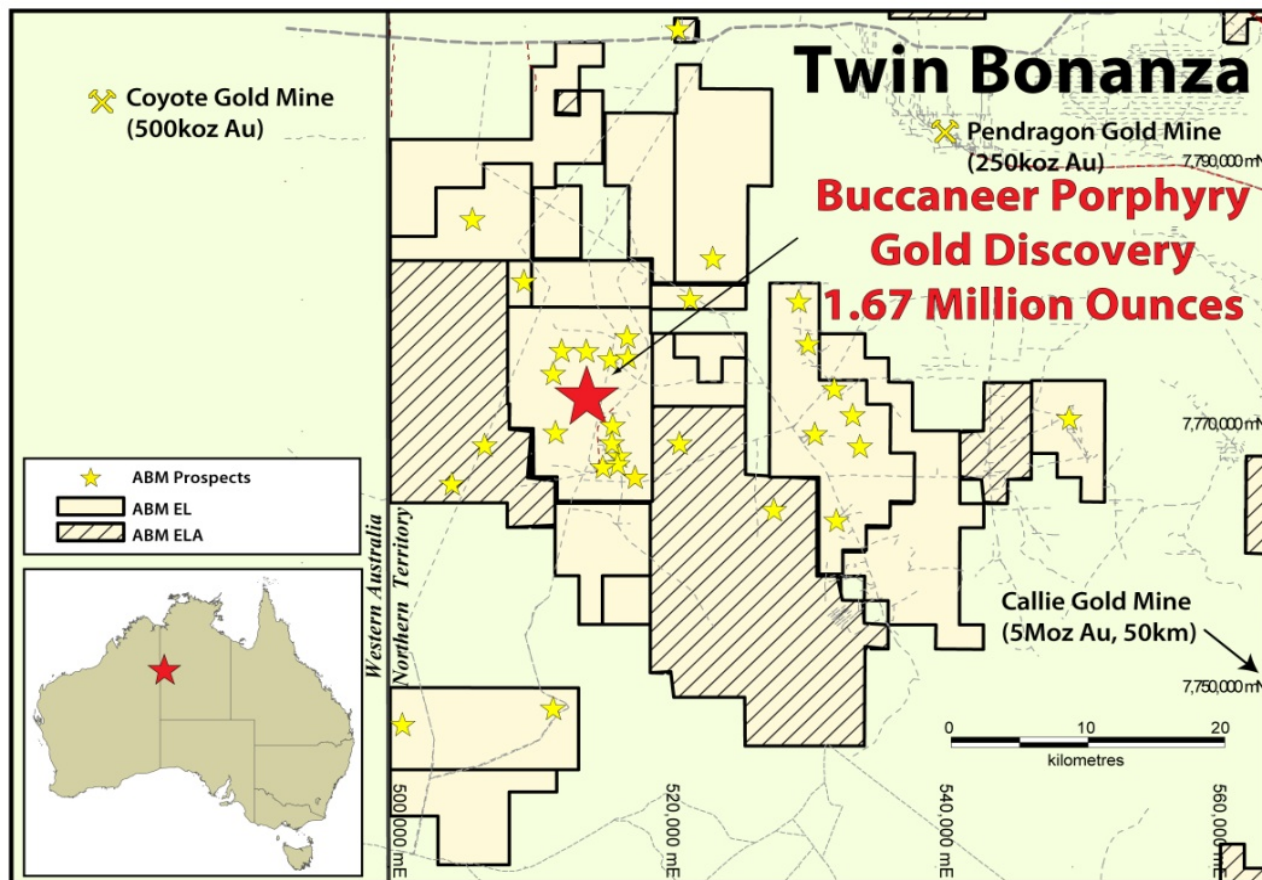
# Why the Tanami-Arunta?

- The most under-explored major gold belt in Australia.
- ABM able to consolidate a significant regional position in two transactions.
- Part of a global Paleoproterozoic gold event.
- Relatively little systematic or deep exploration.
- Analogous to Birimian Shield in West Africa (Ghana, Mali, Burkina Faso etc.).
- Prior to 1990s only yielding relatively small shallow oxide gold deposits.
- Callie Gold Mine (Newmont) discovered with a blind surface signature in 1990s and now one of Australia’s best gold mines (~360,000 oz pa @ 6g/t &>5Moz Reserve + Production).

# Twin Bonanza Gold Camp

## Buccaneer Porphyry Maiden Resource Estimation

- Inferred Resource of 65.8Mt grading 0.79g/t gold with 1.67 Million Ounces gold including:
  - 36.9Mt grading 1.01g/t gold for contained metal of 1.19 Million Ounces or
  - 8.7Mt grading 2.01g/t gold for contained metal of 0.56 Million Ounces.
- Inferred Resource extends over area of 600m x 400m.



# Twin Bonanza Camp

## Buccaneer Gold Porphyry

- New Inferred Resource Statement by independent consultant.
- Zone 600m by 400m by 390m.
- Mineralisation comes to surface.
- 1.2 million square metres of porphyry yet to explore.
- One of the largest single deposit junior gold discoveries in recent years in Australia.
- First million ounce plus porphyry hosted discovery in the entire Tanami Region.
- In ground discovery costs of <\$3.00 per ounce.

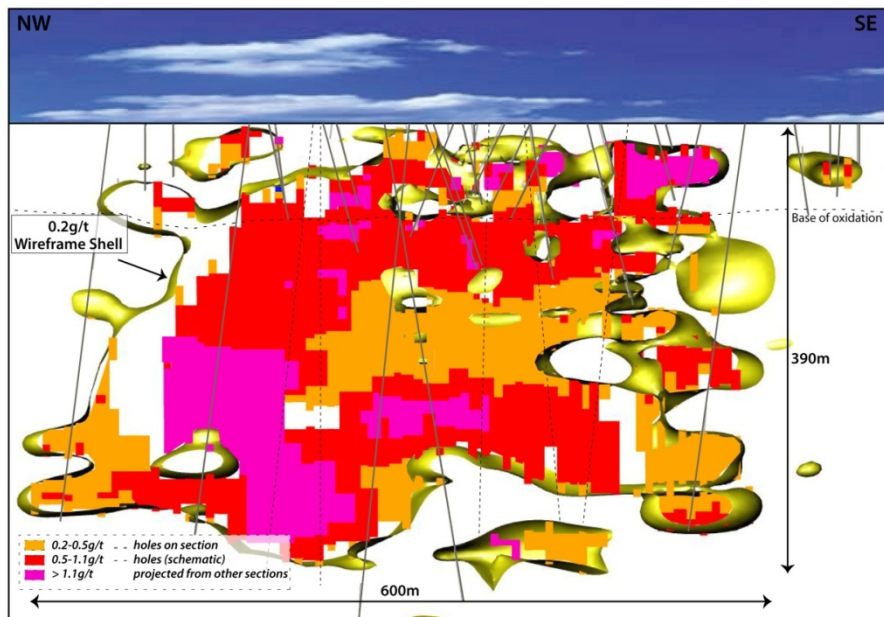
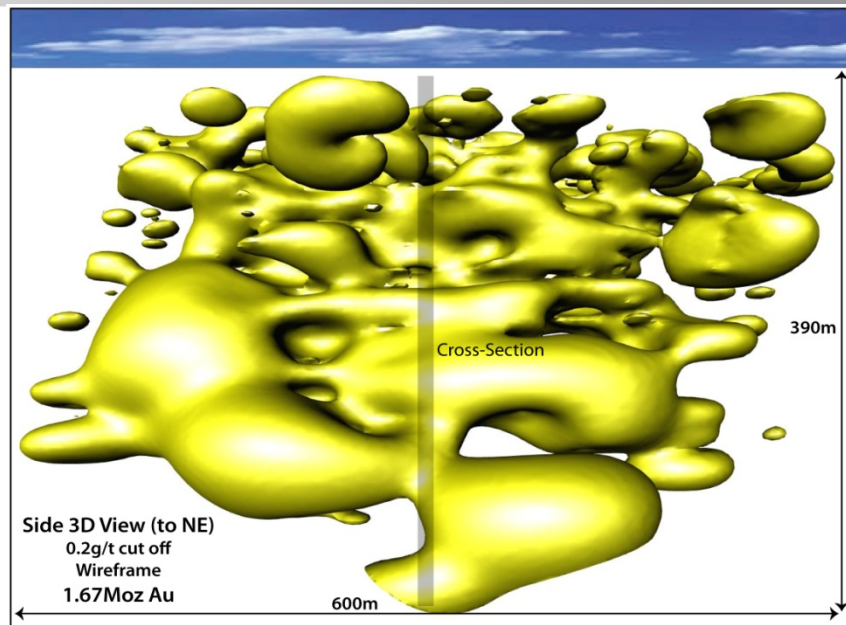
Cut-off Grade (g/t)	Million Tonnes (Mt)	Gold Grade (g/t)	Contained Gold (Million Ounces (Moz))
0.2	65.8	0.79	1.67
0.5	36.9	1.01	1.19
0.7	20.5	1.30	0.86
1.1	8.7	2.01	0.56

*Refer release 21/02/2011 for details*

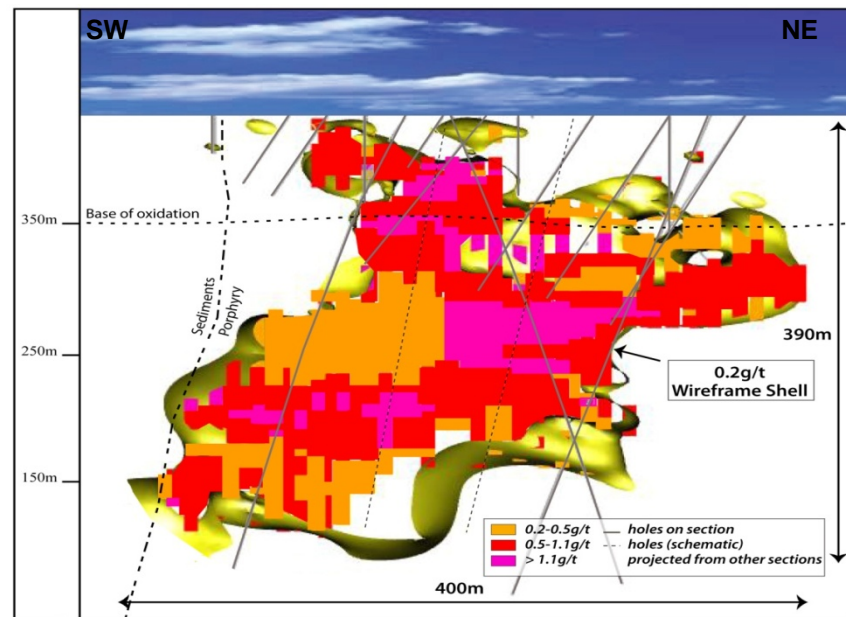
# Twin Bonanza Camp

## Buccaneer Gold Porphyry

- New Inferred Resource Statement 1.67 Million ounces of Gold.
- Open at depth and several directions.



Long Section

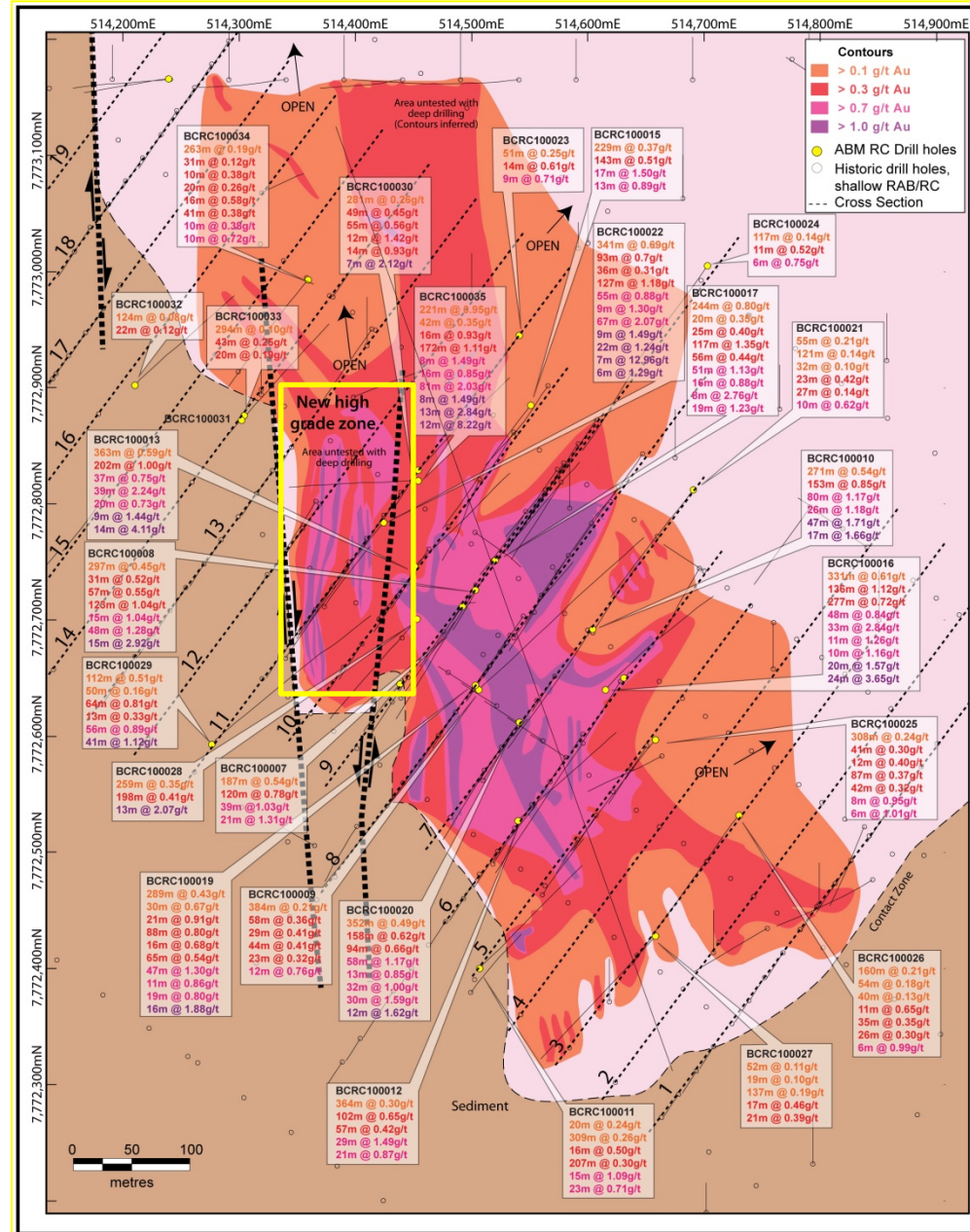


Cross section

# Twin Bonanza Camp Buccaneer Gold Porphyry

- ABM drill result highlights:
  - 363m @ 0.59g/t gold inc.
  - 202m @ 1.00g/t gold
    - 39m @ 2.24g/t gold.
  - 341m grading 0.69g/t gold including:
    - 93m grading 0.70g/t gold and
    - 127m grading 1.18g/t gold including:
    - 67m grading 2.07g/t gold (0.7g/t cut-off).
  - 221m grading 0.95g/t gold including:
    - 172m grading 1.11g/t gold including:
      - 81m grading 2.03 g/t gold.

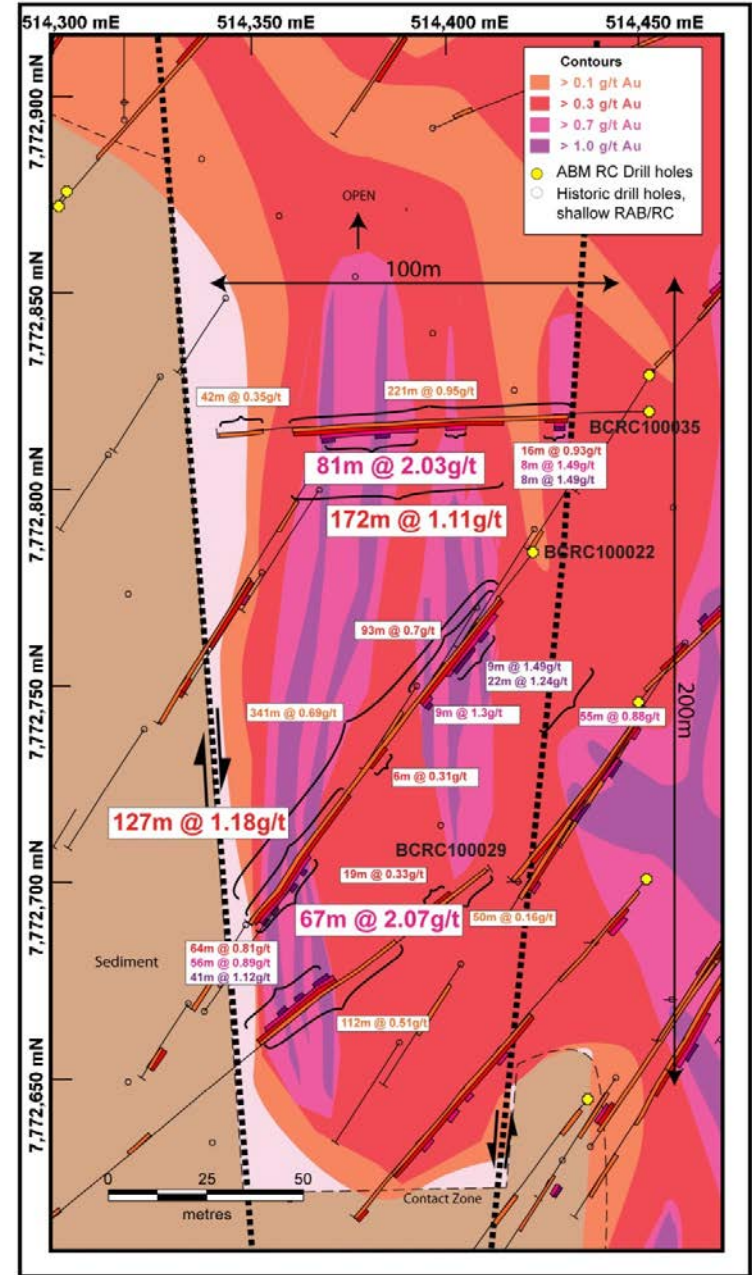
Plan view of southern portion of the Buccaneer Porphyry Prospect showing drill hole locations and geology. Map includes inferred composite contour at various grade cut-offs from drilling projected from various levels to surface i.e. does not represent single level plan-slice – refer to cross-sections for indications of width.



# Twin Bonanza Camp

## Buccaneer Gold Porphyry

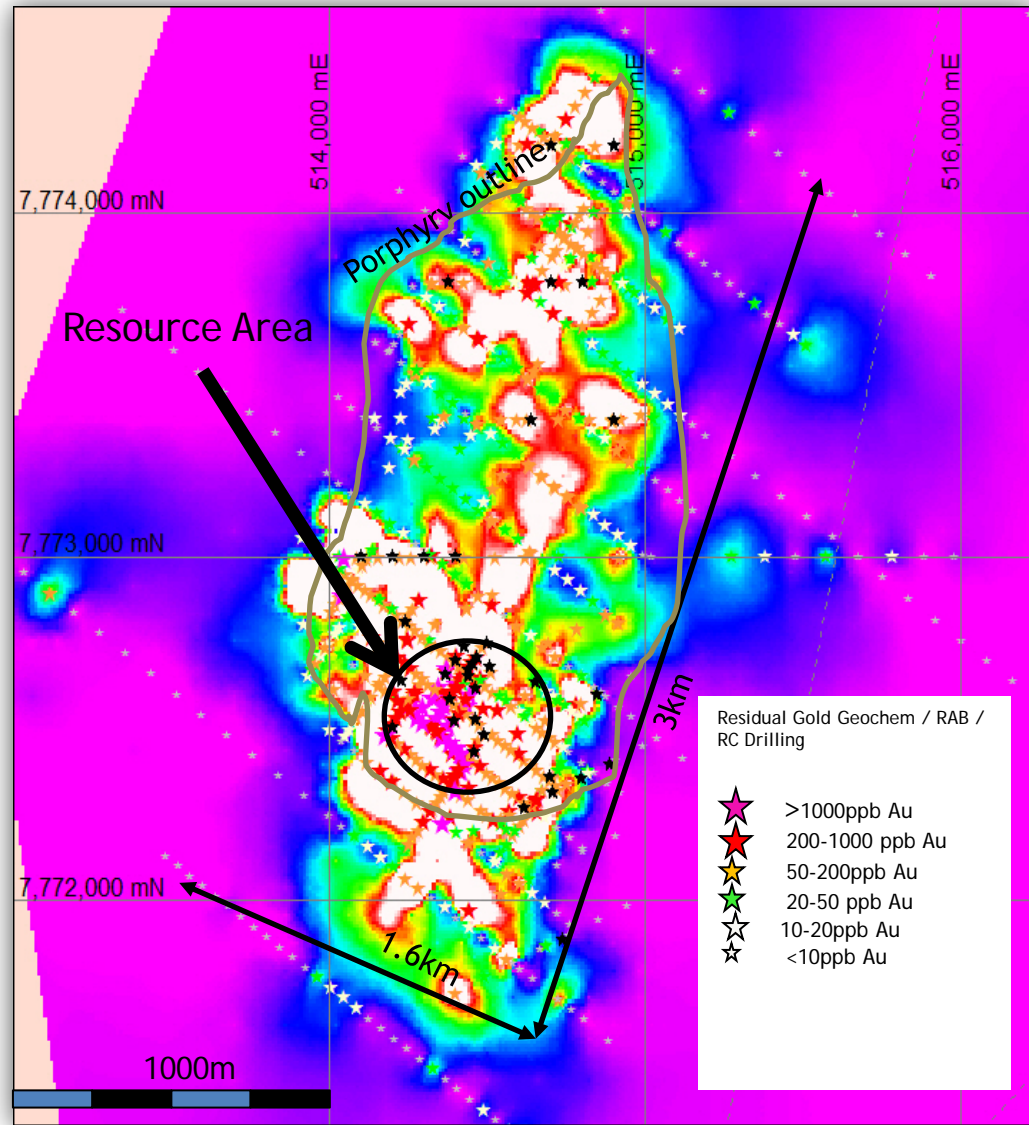
- New higher grade zone recently identified – THE WESTERN ZONE.
- ~200m long and 60 to 100m wide.
- Grading ~>2g/t includes:
  - 67m grading 2.07g/t gold.
  - 81m grading 2.03g/t gold.
- Target zone for 2011 is to expand to 600m long by 60 to 100m width 400m vertical depth (25 to 45Mt volume).

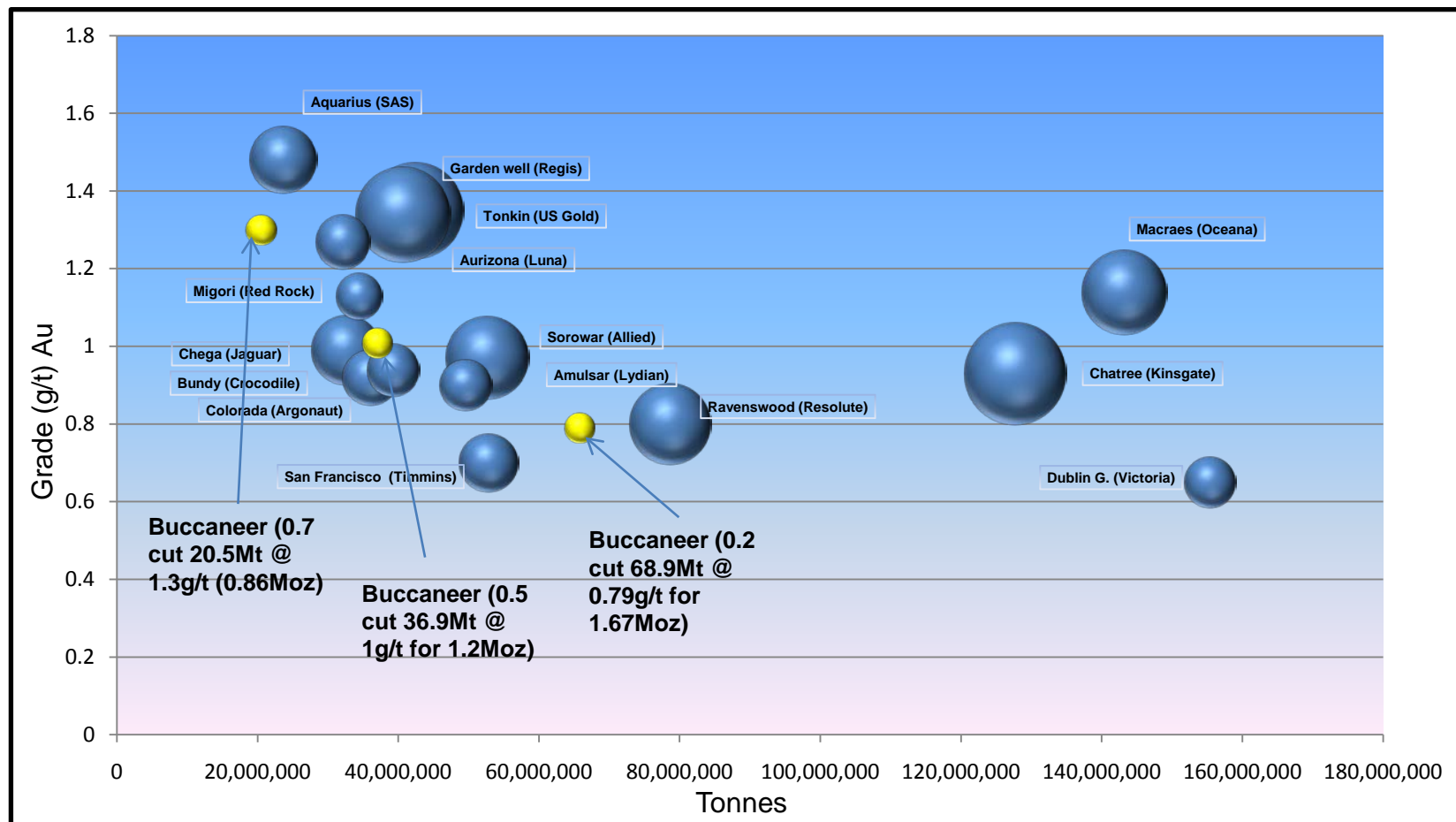


# Twin Bonanza Camp

## Buccaneer Gold Porphyry EXTENSIONS

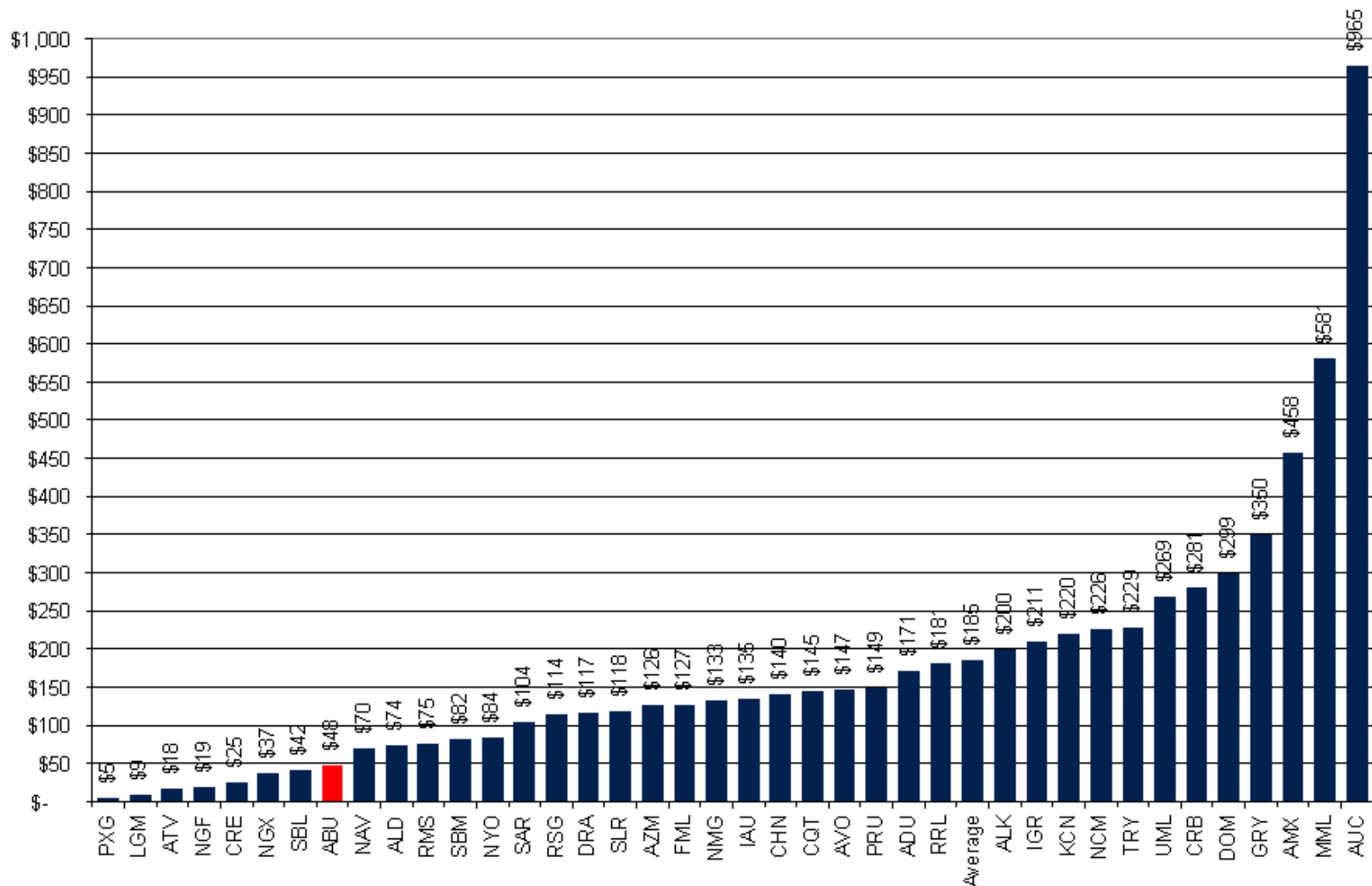
- 1.6km by 3km Gold Anomaly.
- Inferred Resource that only covers a small area of the Prospect.
- 1.2 Million square metres MORE porphyry footprint to be tested by ABM.





- Grade vs Tonnes for a selection of gold deposits around the world.
- The Size of the Bubble is a function of **MARKET CAPITALISATION** of owner.
- Buccaneer falls into the overall grade / tonnage of economic deposits and ABM’s market capitalisation is very low in comparison.
- SOURCE: [www.intierra.com](http://www.intierra.com)

# Explorers - Enterprise Value Per Ounce



As of 25 Feb 2011 (Courtesy Patersons Securities Ltd)

# Twin Bonanza Camp

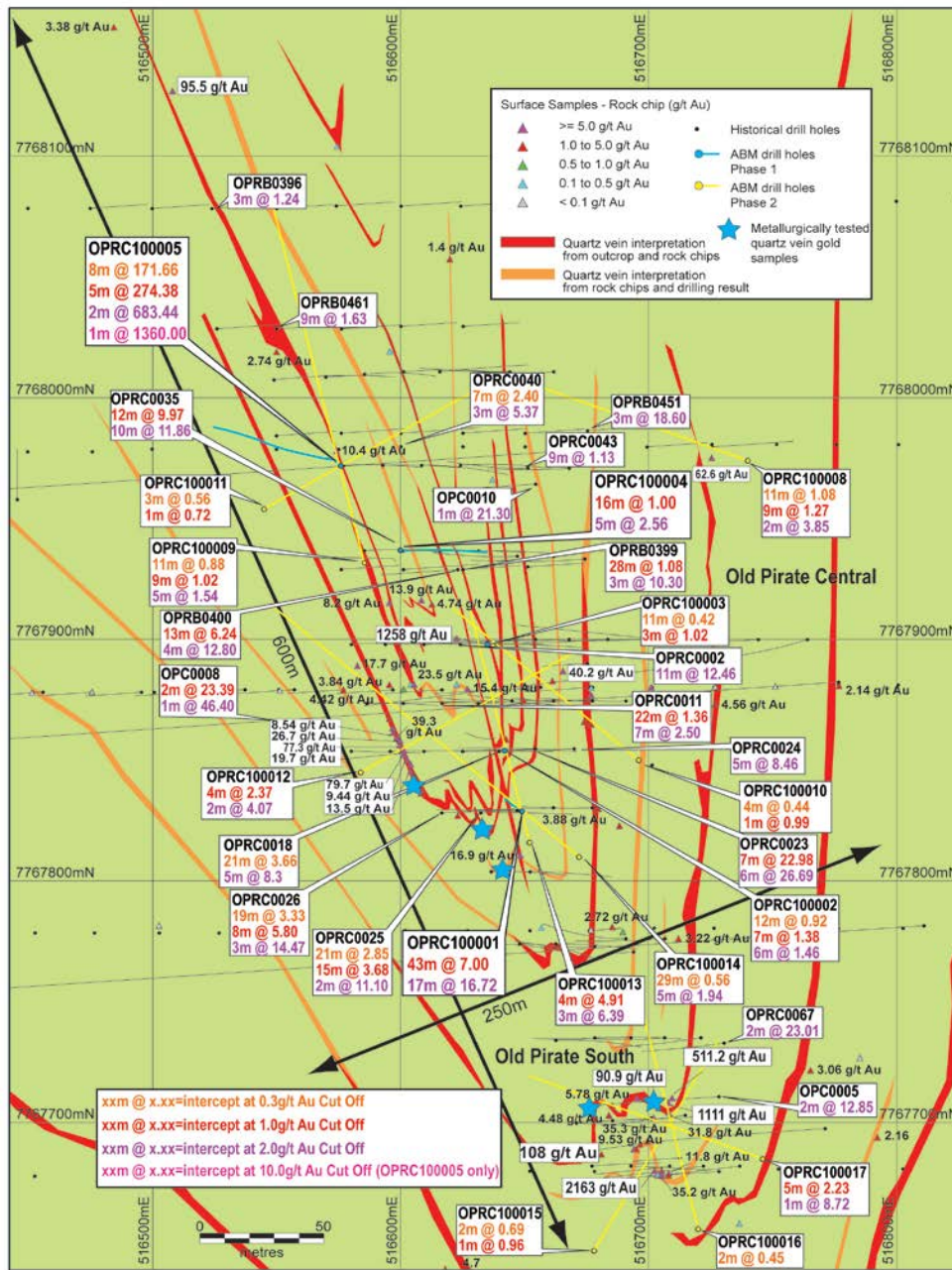
## Old Pirate High Grade Gold Prospect

- 3km long gold anomaly located app 1.8km from Buccaneer.
- 600m x 250m long central / south area.
- ABM's first holes drilled best ever intersections:
  - 43m @ 7.0g/t gold inc
  - 17m @ 16.72g/t gold.
  - 5m @ 274g/t gold inc
  - 1m @ 1360g/t gold.

## And previous results:

- 6m @ 26.69g/t gold
- 7m @ 22.98g/t gold
- 10m @ 11.86g/t gold
- 13m @ 6.24g/t gold
- 3m @ 10.30g/t gold
- 1m @ 46.60g/t gold.

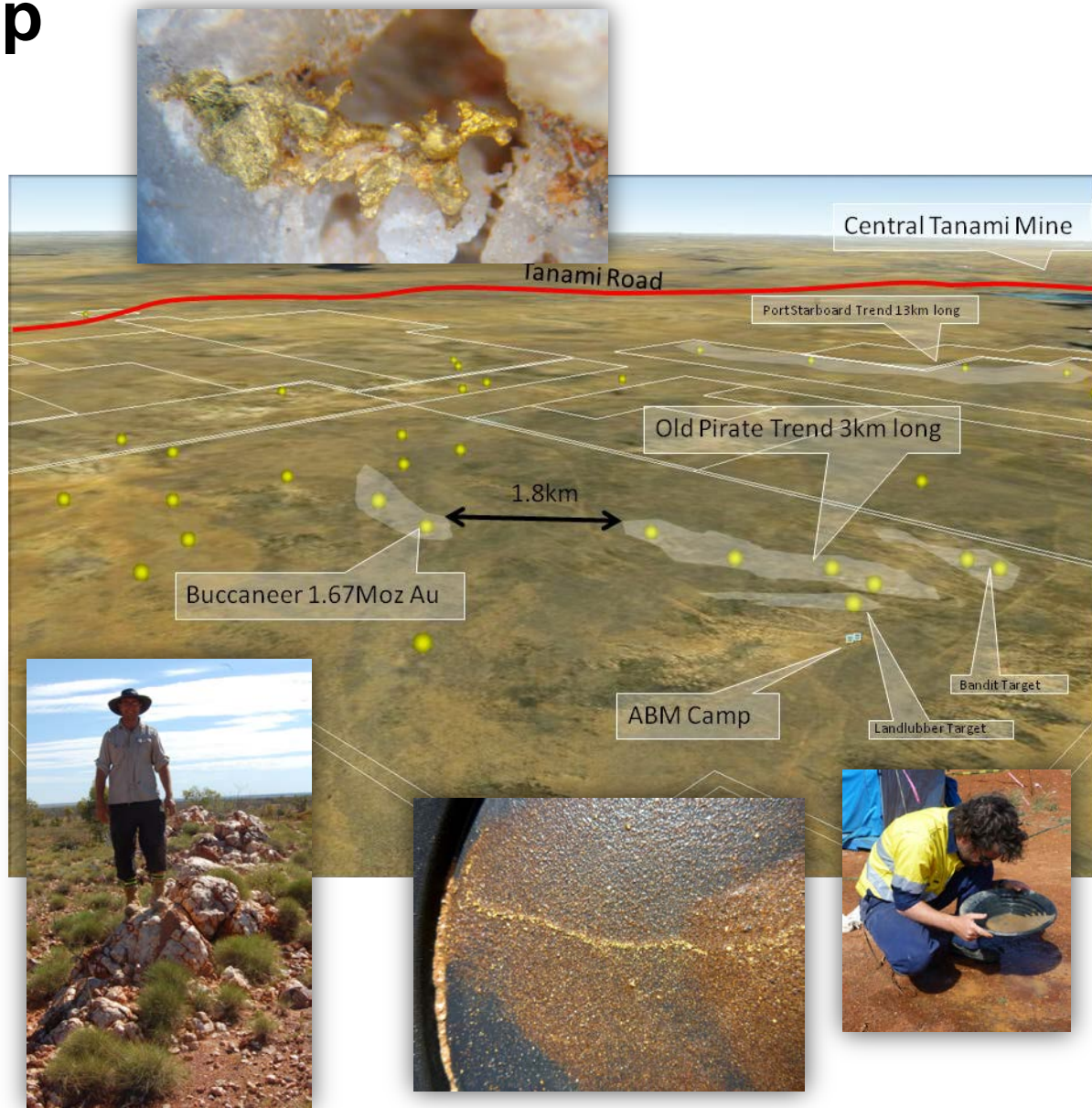
Refer press release 04/04/2011>



# Twin Bonanza Camp

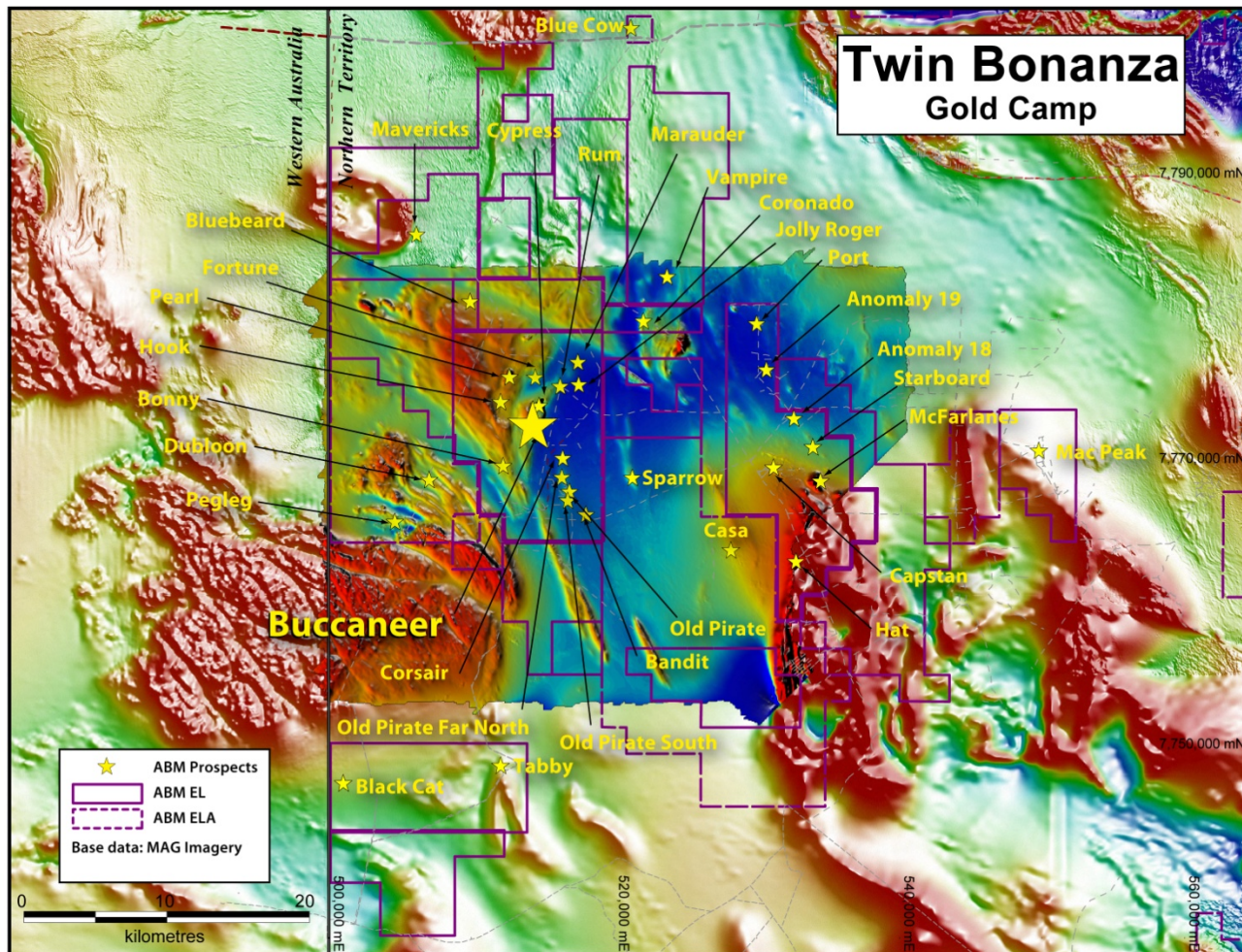
## Old Pirate High Grade Gold Prospect

- Overall the system is >3km long.
- North and south of central area is largely un-tested.
- OP Far North returned 11m @ 3.55g/t gold including 1m @ 32g/t gold in recent drilling.
- Metallurgically outstanding:
  - 85.4% recovery from simple gravity concentration.
  - 99.5% recovery from combined gravity concentration + cyanide leach.



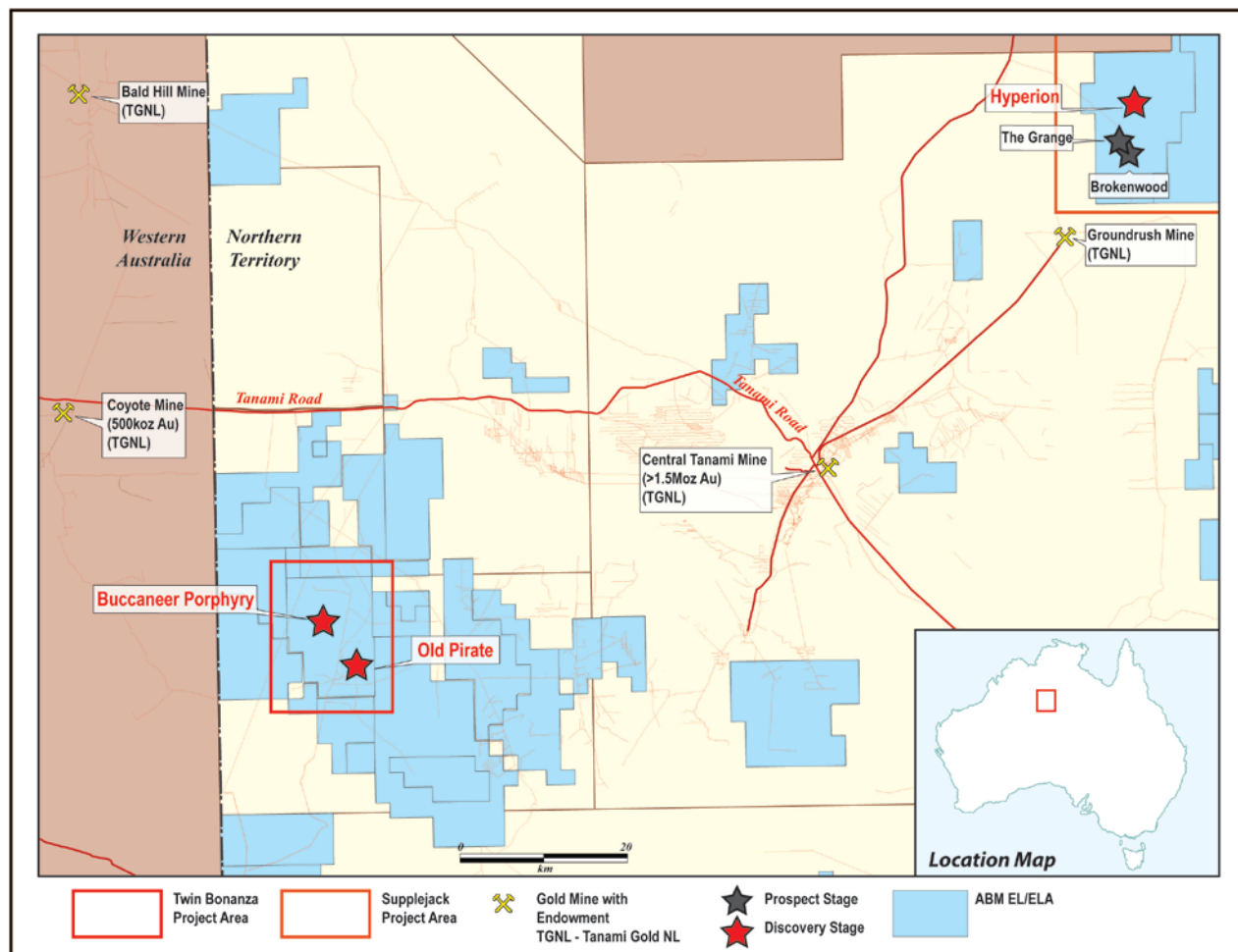
# Twin Bonanza Camp - 30 Targets

- The Trans Tanami Structure.
- Hook and McFarlanes – Syenite porphyry intrusions.
- Vampire – 83g/t gold rock chips at surface.
- Landlubber – 2km arsenic anomaly adjacent to Old Pirate.
- Port-Starboard trend – 13km Au-As-Sb-Bi-Cu anomaly.



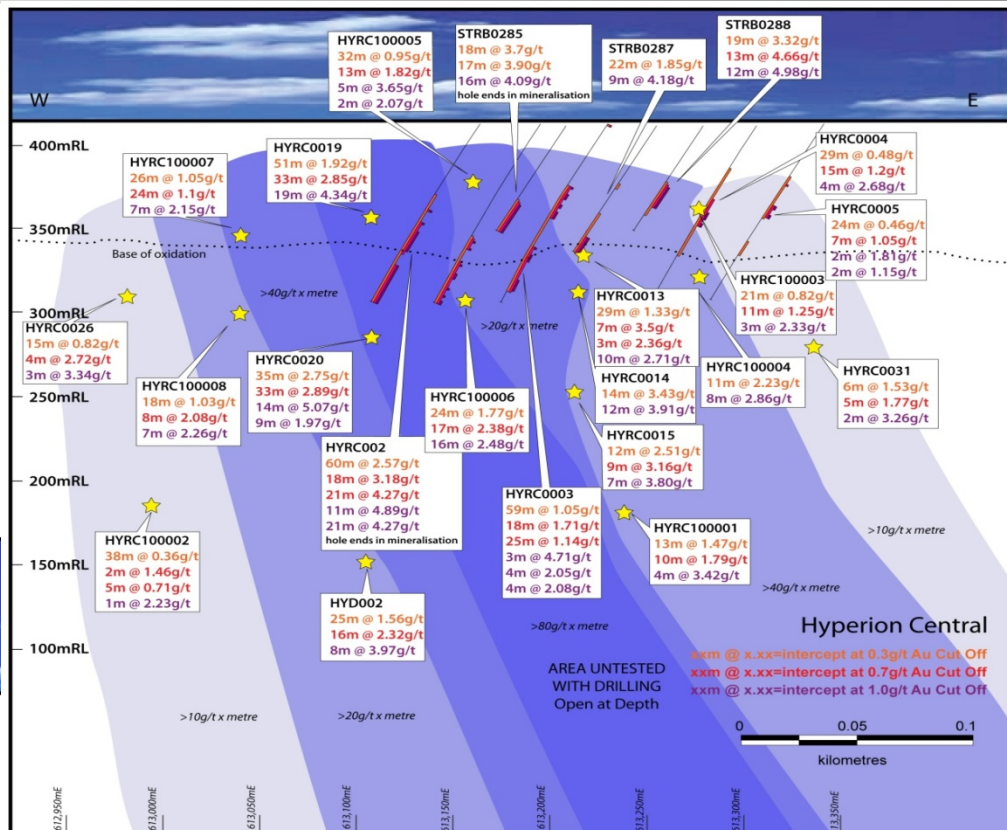
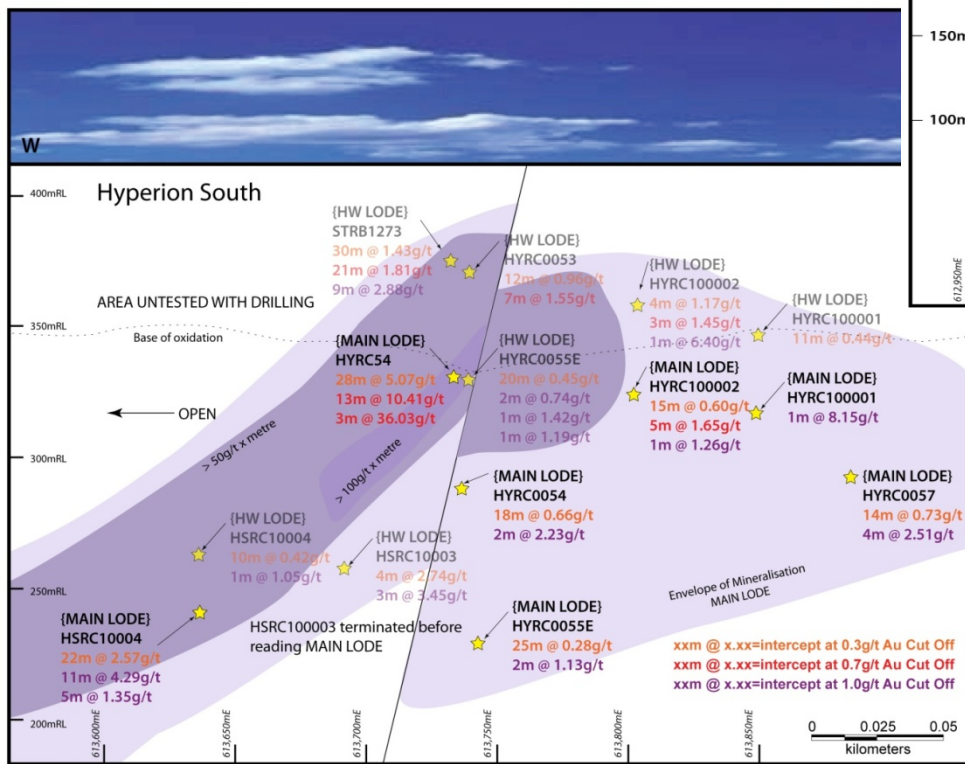
# Hyperion Gold Project

- Located 18 km north-northeast of +1Moz Groundrush Gold Mine.
- 2km by 0.5km gold anomaly.
- Hosted in basalt / sediment / granite.
- 4 individual targets and Brokenwood Project.
- In late 2010 ABM drill tested reconnaissance holes at Hyperion Central and South Prospects.
- Every hole drilled intersected mineralisation.



# Hyperion Gold Project

2km gold system



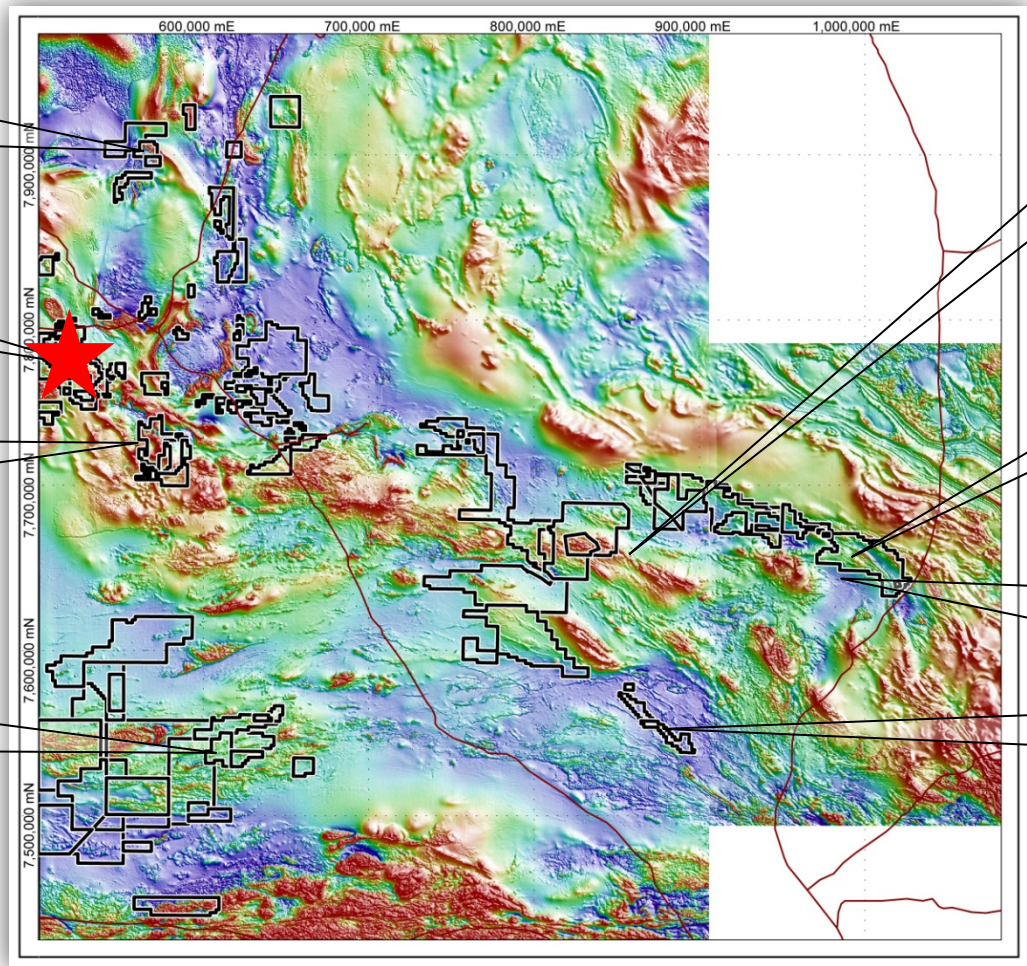
Hyperion Central - Intercepts such as:

- 60m @ 2.57g/t gold inc.
- 21m @ 4.27g/t gold.

Hyperion South - Intercepts such as:

- 28m @ 5.07g/t gold inc.
- 13m @ 10.41g/t gold.

# Other Regional Projects



**North Tanami**  
Large gold anomalies  
untested

**Twin Bonanza**  
**Buccaneer 1.67Moz**

**Mallie**  
Look-alike  
geophysical  
signatures to Callie

**Lake Mackay**  
Copper-Gold Targets  
2x2km Au-Cu  
anomalies untested

**North Arunta**  
60km stretch of  
untested Trans-  
Tanami Structure

**Kroda – 4 targets**  
14km anomalism  
27m @ 6.42g/t Au  
6m @ 25.4g/t Au

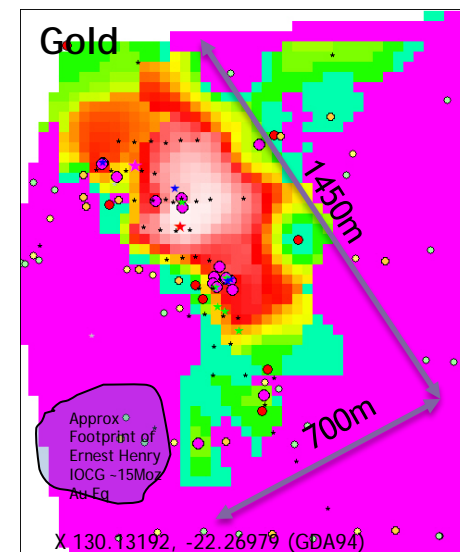
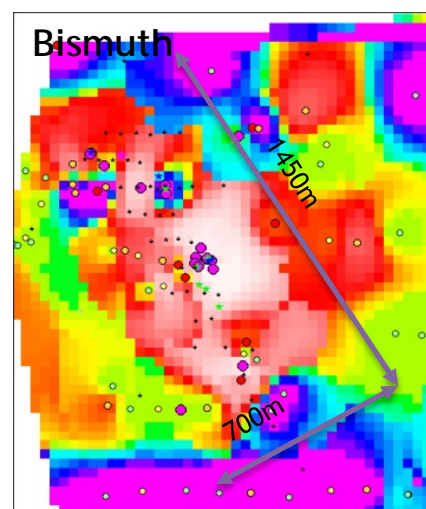
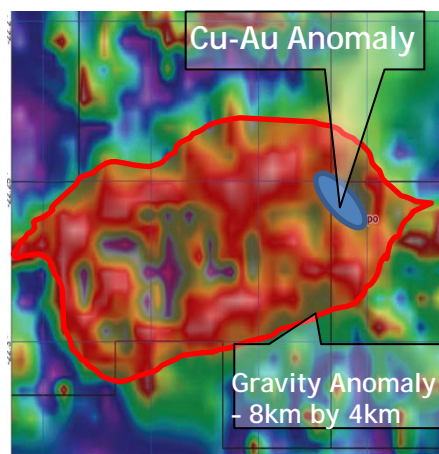
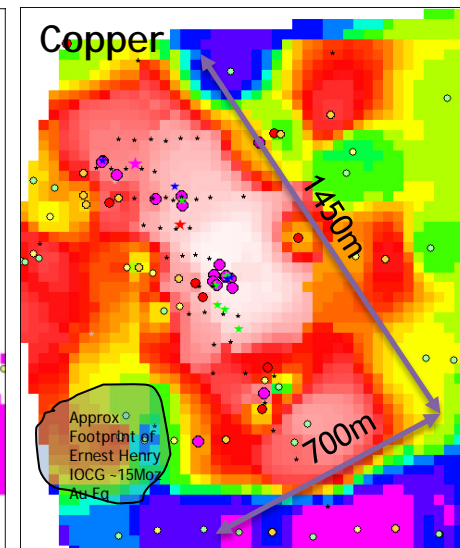
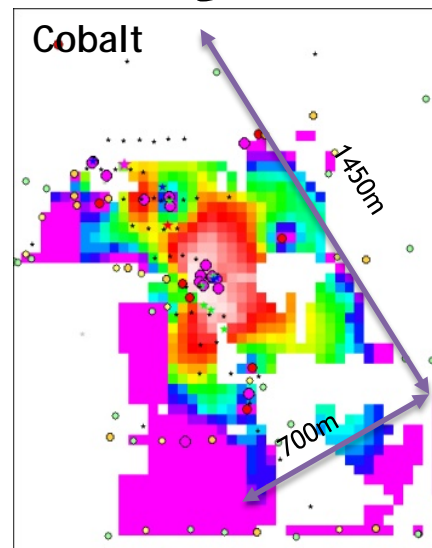
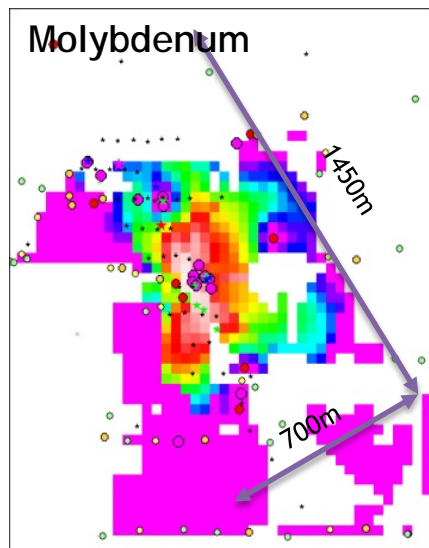
**Barrow Creek Regional**  
180km structural corridor  
Large untested gold  
anomalies

**Stafford – 10 targets**  
20km anomalism  
35m @ 2.02g/t Au  
2m @ 18.15g/t Au

# Lake Mackay

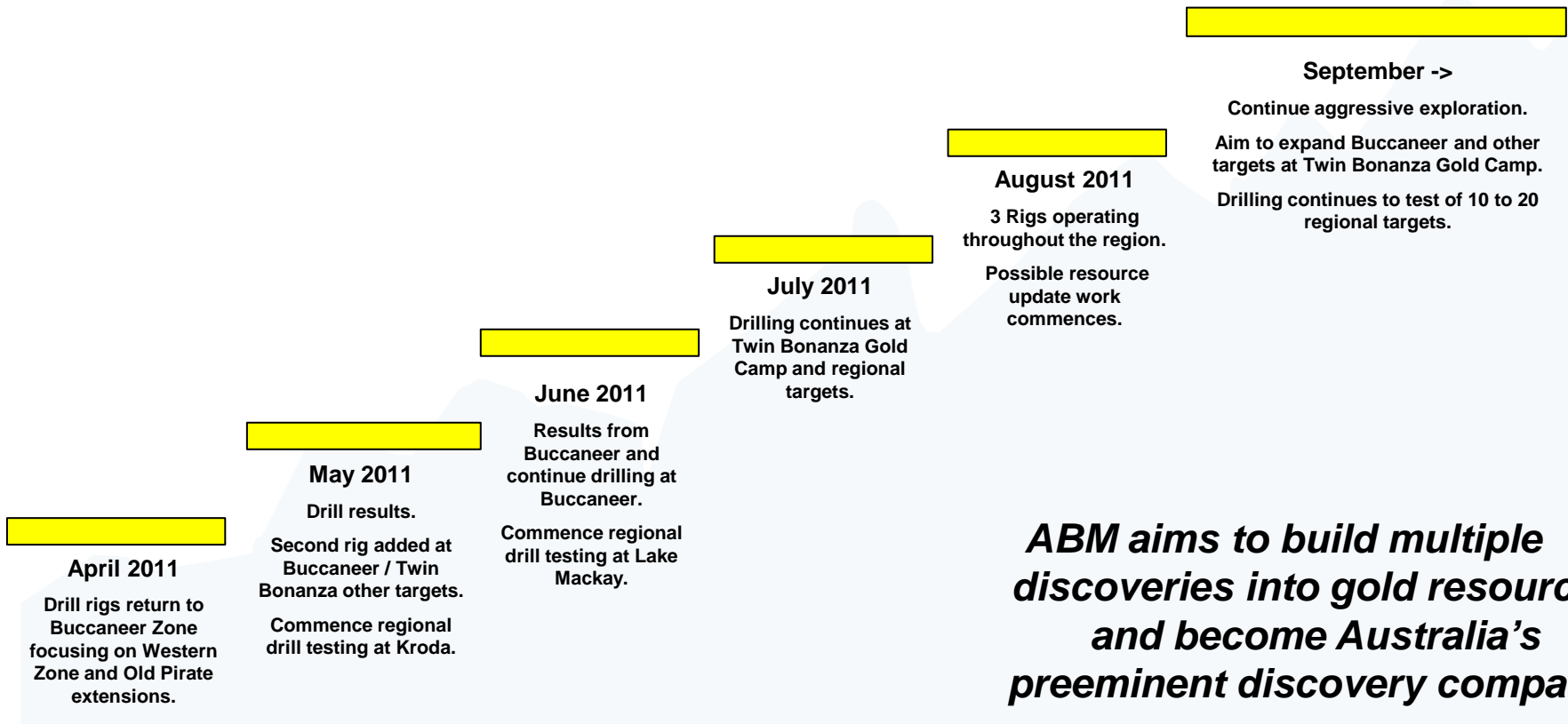
## TEKAPO

- An IOCG?
- 1.45km x 0.7km anomaly.
- On margin of “Olympic Dam” scale gravity anomaly.
- Rock Chips up to 32g/t Au and 0.4% Cu.
- Shallow regolith drilling includes:
  - 23m @ 2.5g/t Au.
  - 4m @ 2.6% Cu.
- BEDROCK UNTESTED.
- ABM to drill 9 holes to depth of 300 to 400m per hole.



# Proposed News Flow

Why buy? Why buy now?



***ABM aims to build multiple discoveries into gold resources and become Australia’s preeminent discovery company.***

# Movie



# Summary

## **The Company...**

**Strong Management.**  
**Passionate exploration team.**  
**Flexible and highly mobile setup.**  
**Focused on GOLD and GOLD-COPPER.**

## **The Assets...**

**New Discoveries and 1.67Moz Resource.**  
**Bulk Tonnage and High Grade Gold Prospects.**  
**~60 Regional Targets.**  
**Largest junior gold land holding in Australia.**  
**Controlling the upside of the most underexplored gold belt in the Country.**

## **The Future...**

**Constant stream of drill results and resource updates.**  
**Advancing Buccaneer.**  
**Pending permits for bulk sample at Old Pirate.**  
**Drilling more and deeper than any other gold junior explorer in the Country.**  
**Aggressive exploration approach, running multiple rigs simultaneously at multiple locations.**

# Thank you.

**For Further Information Please Contact ABM Resources**

**Managing Director – Darren Holden**

**CFO / Company Secretary – Jutta Zimmermann**

**Investors Relations Coordinator – Berdine Mastaglia**

**[admin@abmresources.com.au](mailto:admin@abmresources.com.au)**

**Tel +61 (0) 8 9423 9777**

## Appendix 1: List of ASX announcements relating to technical results in this presentation. Please refer for intercept calculation method, resource estimation, assay results and sampling techniques etc.

04/04/2011	•	Metallurgical Tests Reveal High Quality Ore - 99.5% Recovery
22/03/2011	•	Presentation - Twin Bonanza and 1.67 Moz Buccaneer Deposit
21/02/2011	•	Presentation - 1.67 Moz Gold - And We've Only Just Begun
21/02/2011	•	Maiden Resource Estimation for Buccaneer
03/02/2011	•	Twin Bonanza Gold Camp Expands to 30 Targets
31/01/2011	•	New Targets at Twin Bonanza Gold Camp
13/01/2011	•	Buccaneer Porphyry Delivers Impressive Results
11/01/2011	•	Drill Results from the Hyperion Gold Project
13/12/2010	•	Buccaneer Continues To Grow With Step Out Drilling
15/11/2010	•	2010 Old Pirate Drilling and Screen Fire Assay Program
04/11/2010	•	ABM adds second drill rig to NT exploration programs
18/10/2010	•	Step Out Drilling at Buccaneer Delivers Excellent Intercepts
22/09/2010	•	ABM Continues to Expand Buccaneer Gold Porphyry
13/09/2010	•	Best Intersection at Buccaneer - 202m grading 1g/t Gold
31/08/2010	•	Update Old Pirate High Grade Gold Prospect at Twin Bonanza
19/08/2010	•	Buccaneer Porphyry Gold Drill Results Double Vertical Extent
27/07/2010	•	Bonanza Grades at Old Pirate - 5 metres at 274 g/t Gold
12/07/2010	•	Drill Results - 35m at 6.35g/t Au inc 8m at 21.78g/t Au
07/07/2010	•	Exploration Update - Visible Gold at Old Pirate South
15/06/2010	•	Exploration Update from Twin Bonanza
24/05/2010	•	First Drill Results - High Grade Intercept Extends Sabre
13/05/2010	•	Samples Return 20.3% Copper and 271 g/t Silver
27/04/2010	•	ABM Resources Announces the Commencement of Drilling
16/04/2010	•	Presentation - The Big 8
31/03/2010	•	Newmont Transaction Complete - Prioritising 8 Discoveries
16/03/2010	•	Kroda Gold Project - 6 Metres at 25.9g/t Gold
09/03/2010	•	Hyperion Gold Project with 60 m at 2.57 g/t Gold
02/02/2010	•	The Old Pirate High Grade Gold Project
01/02/2010	•	Detail on the Twin Bonanza Porphyry Gold Project
28/01/2010	•	Acquisition of Advanced Gold Prospects from Newmont
18/01/2010	•	Exploration Update for Reynolds Range Project Area